

Presented by



ArtSouthWA

Southern Art + Craft Trail

Event 2024



74 Exhibitions & Open Studios

**SATURDAY 21ST SEPTEMBER
TO SUNDAY 6TH OCTOBER 2024**

Connect with us!

ArtSouthWA and the Southern Art and Craft Trail

 www.artsouthwa.com.au

  [southernartcrafttrail](https://www.facebook.com/southernartcrafttrail)

**FREE GUIDE
FREE EVENT
ART TRAIL TOURS**



ART TRAIL INFORMATION



Welcome to Country

On behalf of the Custodians of Menang Boodja, I respectfully acknowledge the Bibbulman People to the west, Goreng People to the north and Wirlomin People to the east, extending the hand of friendship, reconciliation and a warm all-embracing Welcome to Country to all visitors to Menang Boodja.

I acknowledge Elders past and present and welcome emerging young leaders expected to take up cultural leadership roles as some of our Elders assume support roles. Menang Boodja is in urgent need of a 'soft, respectful touch', our flora, fauna, hopes and aspirations appear dim as demand exceeds lands ability to provide cultural, maternal care. As First Nations People, we are culturally obligated to ensure our Boodja remains healthy.

LESTER COYNE

How to Find the Artists

To discover live maps to venues and access all artist details including their own websites, please go to www.artsouthwa.com.au. Drop down the Members menu and click on Members Directory.

Plan Your Route

Exhibitions have varying opening times so check the dates and times when planning your route.

Dates marked with a red cross indicate CLOSED that day.

Travel Safely

Travel at a safe speed – adapt your speed for the weather, light, traffic and road conditions. Be aware of wildlife, livestock, road trains and machinery on country roads.

Be aware that you are responsible for your own safety and personal belongings. ArtSouthWA is not responsible for any loss or damage or injury, however caused, to the property or person of any visitor to studios, or other premises listed in this guide book

Opening Times

Opening times of venues are indicated in the guide book according to information provided at time of going to print. ArtSouthWA is not responsible for any venue not being open when indicated in the guide book. If in doubt, please contact the artist or venue first. Exhibitors prefer that you only visit during the stated opening times.

ArtSouthWA activities include:

- Presentation of the annual Southern Art and Craft Trail Event, and SACT offerings.
- An annual program of art education workshops for its members and other interested members of the public.
- Promotion of members for 12 months of the year through various social media platforms.
- An online member directory at www.artsouthwa.com.au
- Regular posts of opportunities and arts news on our Instagram and Facebook pages 'ArtSouth WA and the Southern Art & Craft Trail'.

Event Locations

Each venue listing outlines the most direct route to the venue. They are also geographically grouped and colour coded throughout the booklet. We have provided general locality maps for your reference. We recommend you use comprehensive local or online maps to assist you to find venues. All Exhibitions have a Google Maps locator on www.artsouthwa.com.au. See the 'Member Directory' then just select 'Trail Directory'.

Photography

Photos used throughout this booklet have been provided by artists and other credited sources. No photos can be reproduced without the express permission of the copyright owners. We encourage you to take photos of artists and their exhibitions (with their consent) and post to Social Media. On Facebook include the tag [@southernartcrafttrail](https://www.facebook.com/southernartcrafttrail). On Instagram include the hashtag [#southernartcrafttrail](https://www.instagram.com/southernartcrafttrail). Sharing and tagging our event will help our artists.

WELCOME

Welcome Message From the Ministers:

The WA Government is proud to support ArtSouthWA and its delivery of the 2024 Southern Art and Craft Trail through the Regional Arts Sector Investment (RASI) Program and the Regional Events Scheme (RES).

The RASI program is a part of the Regional Arts and Culture Investment Program, delivered by the Department of Local Government, Sport and Cultural Industries (DLGSC) with additional funding from the Department of Primary Industries and Regional Development (DPIRD). The RASI program supports the operational costs of regional Western Australian arts organisations ensuring they can deliver relevant, diverse and informative arts experiences in regional communities.

The RES initiative was established to support event holders across the State with the development of events to drive tourism to regional Western Australia. The scheme plays an important role in positioning the State's five tourism regions as exciting destinations by showcasing and promoting the host region's unique attractions.

In 2024-25, a total of 17 regional organisations and 73 regional events are being supported through RASI and RES respectively.

ArtSouthWA have done a tremendous job in encouraging participation in the arts and adding to the vibrancy and liveability of Great Southern communities. Celebrating its 21st year, the 2024 Southern Art and Craft Trail involves 73 venues and over 500 artists.

Tourism, events and creative industries are a key part of the WA Government's plan to diversify the economy, create jobs and develop business opportunities, especially in regional Western Australia. Events, particularly in our regions, help to bring vitality to local communities, drive visitation and inject valuable tourism dollars into regional economies.

Not only do these tourism events bring vibrancy and economic benefits to our regions, they also help to continue diversifying the Western Australian economy, through creating jobs and developing business opportunities.

We hope everyone enjoys the 2024 Southern Art and Craft Trail and encourage you to support the artists through purchasing their works and promoting their art. We also encourage you to stay in the region a little longer, and discover the many incredible experiences the Great Southern has to offer.



HON RITA SAFFIOTI MLA,
Deputy Premier;
Minister For Tourism



HON DAVID
TEMPLEMAN MLA,
Minister For Culture
And The Arts



HON DON PUNCH
MLA,
Minister For Regional
Development

Welcome to the 2024 Southern Art & Craft Trail

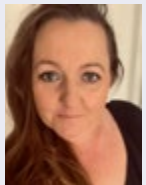
A celebration of creativity, innovation, and environmental consciousness. I am thrilled to present this year's trail, which showcases the remarkable talents of artists who draw inspiration from the natural world and incorporate sustainable practices into their work.

As you journey through the trail, I encourage you to immerse yourself in the rich tapestry of artworks on display. Whether you find yourself captivated by the intricate details of botanical illustrations, the vibrant colours of floral compositions, or the innovative use of recycled materials, there is something here to inspire and uplift every visitor.

At its heart, the Southern Art & Craft Trail is more than just an exhibition — it is a testament to the power of art to provoke thought, spark conversation, inspire change and celebrate our connection to the natural world. I encourage you to immerse yourself in the creativity and passion of our artists.

On behalf of the ArtSouthWA Board and participating artists, I extend my heartfelt gratitude to all who have supported the Southern Art & Craft Trail 2024. Whether you are a seasoned art enthusiast or a first-time visitor, your presence and enthusiasm are invaluable to the success of this event.

Thank you for joining us on this journey. Enjoy the Art Trail!



SIMONE KLOSE
Chair, ArtSouthWA

WHERE

DREAM

EVENTS HAPPEN

Experience wondrous events and adventure through otherworldly landscapes in the Great Southern.

- Feel the surging power of the Southern Ocean, watching from the platform hanging over The Gap and Natural Bridge.
- Hike up one of Western Australia's highest peaks, Bluff Knoll, for wondrous views of Stirling Range National Park.
- Experience the Aboriginal traditions and culture in Kojonup, where you can immerse yourself in Aboriginal storytelling.
- Journey through the rivers of Walpole before walking amongst towering tingle trees at the Valley of the Giants Tree Top Walk.
- Discover the Great Southern wine region, sampling the vast array of wine varieties from cabernet sauvignon to merlot and chardonnay.
- Soar above at Porongurup National Park's Granite Skywalk, with spectacular 360-degree views.
- Marvel at a chasing ship and processing factory at Albany's Historic Whaling Station, the only experience like it in the world.

Follow us @WesternAustralia | #WAtheDreamState



WESTERN
AUSTRALIA
WALKING ON A DREAM

WESTERNAUSTRALIA.COM

History of the Southern Art and Craft Trail

Showcasing visual arts for 24 years

How it all began

A dedicated team from Denmark, lead by Angus McKenzie formed ArtSouthWA (ASWA) in 2000 and created the first Art Trail in 2003. It featured 36 venues stretching from Walpole to Bremer Bay and multiple localities along the way.

How it grew

Each year the number of exhibitions grew, peaking in 2018 to 93. Only COVID brought a halt in 2020. Venue numbers have risen back to 74 for both 2023 and 2024 with high percentages of first-time exhibitors.

Over 650 different artists and groups have taken part over the years, with many exhibiting multiple times. Notable exhibitors in 2024 who have exhibited for nearly 20 years are Adventures in Wood in Albany and June Smith in Denmark.

How it's been supported

ASWA supports and promotes hundreds of regional artists but could not do so without their volunteers, sponsors and grant providers. The ASWA Board give over 2000 volunteer hours to produce the Art Trail, along with a part time administrator, it is more than a full time job.

The City of Albany together with Tourism WA are the longest continuing Art Trail supporters. Bendigo Bank, The Great Southern Development Commission, Regional Arts WA and Regional Development Australia Great Southern are much-appreciated partners.

The Future

Looking ahead, ArtSouthWA aims to continue growing and promoting opportunities for regional artists, enhancing community wellbeing, inclusivity, and encouraging visitors to explore the region. In 2025, the organisation plans to expand its program offerings by creating two new opportunities for artists, specifically designed to leverage off peak visitation periods to the region. This expansion is set to further ASWA's role in the artistic and cultural landscape of the Great Southern region.



Cover Image - Sue Noakes, *Houses*

My passion is clay but I use many different mediums. I love to play and the more relaxed I become the more adventurous and innovative my creative expression. I have an Advanced Certificate in Art & Design. I constantly attend various workshops and classes at Albany Summer School. To be immersed for a time with like creative minds is what makes my soul sing.

The Art Trail encompasses the creative expression of all taking part. Enjoy the 2024 event.

Cover photograph | Carol Duncan

ART TRAIL EXHIBITION AWARD



2023 winners Ron Baker and Marjan Bakhtiarikish

Fill in our survey online

You could win a Busy Blue Tour & Hilton Garden Inn Albany Vouchers*

The Southern Art and Craft Trail Event Exhibition Award

This award is given for the best overall Art Trail Exhibition by an individual or group. When you visit a location from this booklet you will be encouraged to complete a small survey and cast your vote for the best Exhibition 'experience'. You'll be asked to consider the quality of the work, the ambience of the exhibition and the personal interaction you have with the artists or organiser.

* Complete just one survey and go into the draw to win a voucher for two people for a Mt Barker Grape Escape full day wine tour, valued at \$398 donated by Busy Blue Bus Albany Tours, and a Hilton Garden Inn Albany voucher for 2 nights accommodation and 15% of further nights valued at \$320+.



surveymonkey.com/r/2024SACT



GREAT SOUTHERN WA

*conditions apply

RDA Great Southern are proud to encourage excellence while supporting the artists of the greater southern region of WA.

ARTIST AND VENUE INDEX

VENUE ARTIST

1	Manjimup Arts Hub Inc
2	MUSE Shala
3	Gallery Aura
4	The Station Gallery Mount Barker
5	Elizabeth Jenkins
6	Bronte Wilkes
7	Little Bit of Barker
8	Sobrane
9	Mitchell House Arts Centre
10	Lavender Bee
11	Art Chatter Gallery
12	The Cheeky Parrot Gallery
13	Abi Jasper
14	Oliver Coakley
15	Catherine Brooker
16	Seirah Woodward
17	Marion Nelson
18	Carol Ann O'Connor
19	Jonathan Hook
20	June Smith
21	Nell Parker
22	The Mill Art Group Denmark
23	Denmark Visitor Centre Gallery
24	Ellis Pearson
25	Chrissie Gregory

VENUE ARTIST

26	Taryn Smallwood
27	Kate Samiotis Studio
28	Hayley Wisewould
29	Ebony Harris
30	Old Elleker Studio
31	Meleah Farrell & Narelle Clark
32	Phoenix Fine Arts
33	Merry Robertson
34	Sue Codee
35	Len McKenna
36	Albany Aboriginal Corporation
37	The Village
38	Carol Hope
39	Designer Dirt Creatives
40	Brown & the Beard
41	CoCreatives
42	Laura Newbury
43	King River Hall
44	Abigail Parker
45	Ron Baker and Marjan Bakhtiarikish
46	Louise Stewart Brown
47	Lower Kalgan Artists
48	McKenzie Studio
49	Albany Pottery Group Inc.
50	Felters in the Great Southern

VENUE ARTIST

51	Home Grown & All the Rest
52	#WOMENWHOPRINT
53	Jane O'Halloran
54	Butter Factory Artists @VAC
55	Cynthia Orr
56	Ros Jenke and Julie Fletcher
57	Susan Merli
58	Kerri Blades
59	Rose Chapman-Hill
60	Adventures in Wood
61	The Atelier at Beaumaris Escape
62	Karen Stone / Maverick Stone
63	Down South Arts and Crafts Collective Inc
64	Burrata Wood Fire Cafe
65	Nicci Daniele Art Studio
66	Flourish Eclectic
67	Penny Baker
68	Butterscotch
69	Albany Art Group Inc.
70	Scout Seas
71	Deo Gloria Art Group
72	Coastal Creations & Co
73	Eclipse Creative Collective
74	Community Living Association

Legend

G Gallery Exhibition	H Home Display	S Studio Exhibition
O Other Venue	R Restaurant / Café	W Winery
 Venue open at other times through the year Exhibiting artists, open days and times may vary. Check with venue.	 Venue is running a workshop, see page 8	
 Refreshments available at venue or close by	 Restroom Facilities	
 Wheelchair Access	 Off-road Parking	
 Credit Card Facilities Available	 Day Venue CLOSED Date Date covered	

Region Colour Codes

1-3 Manjimup / Kojonup / Gnowangerup
4-14 Kendenup / Mt Barker
15-31 Denmark / Torbay / Redmond
32-74 Albany

Administration Officer

Anne Sparrow
P.O. Box 6009, Albany, WA 6332
Email: admin@artsouthwa.com.au

www.artsouthwa.com.au



Look for this sign at all Art Trail venues

SCHOOLS ON THE ART TRAIL

See Young Artists' Work at the Following Venues

Schools on the Art Trail is back, introducing you to the work of our regional students. Look out for these exhibitions located in our Art Trail towns- utilising public buildings, retail venues and windows. While the works are not for sale, we encourage you to admire our rising stars and connect with the school, should you wish to know more.

With the generosity of our long time Art Trail supporter - Albany's Historic Whaling Station at Discovery Bay – participating schools are in the draw to win one of three family passes

to contribute towards their school fundraising programme.



A NEWDEGATE PRIMARY SCHOOL

Years Kindergarten - Six
IGA shop window display
5 Maley St, Newdegate

B BRAESIDE PRIMARY SCHOOL

Years Pre-primary to Six
Artisan Store
24 Austral Tce, Katanning

C BORDEN PRIMARY SCHOOL

Various Years
Elders
Cnr Trappitt Street & Norrish Place, Borden and Borden Post Office
15 Moir Street, Borden

D FRANKLAND RIVER PRIMARY SCHOOL

Years Pre-primary to Six
Frankland River CRC
55 Wingebellup Rd, Frankland River

E KENDENUP PRIMARY SCHOOL

Years Kindergarten to Six
Pet Time Pets
26 Langton Road, Mount Barker

F HOMESCHOOLERS

Various Years
The Lavender Bee
2/26 Langton Road, Mount Barker

G NORTHCLIFFE DISTRICT HIGH SCHOOL

Years One to Six
Karri Country Good Food
13 Wheatley Coast Road, Northcliffe

H WALPOLE PRIMARY SCHOOL

Years Pre-Primary to Six
Ficifolia Community Garden,
Latham Avenue, Walpole and
The Marron Tale Cafe and Marron Farm,
5284 South Coast Hwy, Bow Bridge

I GOLDEN HILL STEINER SCHOOL

Various Years
The Environment Centre
35 Strickland Street, Denmark

J FLINDERS PARK PRIMARY SCHOOL

Years Kindergarten to Six
The City of Albany Library,
221 York St, Albany

K NORTH ALBANY SENIOR HIGH SCHOOL

Years Seven to Twelve
The Health Nut,
30 Peels Place, Albany

L PARKLANDS SCHOOL

Various Years
Albany Entertainment Centre Foyer,
2 Toll Place, Albany

M ALBANY SENIOR HIGH SCHOOL

Years Seven to Twelve
Kate's Place, 42 Stirling Terrace, Albany and
City of Albany Library
221 York St, Albany

N GREAT SOUTHERN GRAMMAR

Year Two
Albany Entertainment Centre Foyer,
2 Toll Place, Albany

O MOUNT LOCKYER PRIMARY SCHOOL

Years One to Five
Three Anchors
2 Flinders Parade, Albany

P BETHEL CHRISTIAN SCHOOL

Years Seven, Nine and Ten
Bunnings Warehouse
162 Chester Pass Rd, Albany



Historic Whaling Station • Australian Wildlife • Wildflower Garden



Experience the best of the South Coast at Australia's last Whaling Station.

Open 7 days 9am - 5pm (Closed 25 Dec) | Annual Passes available




81 Whaling Station Road, Albany Western Australia 6330

P. (08) 9844 4021 | E. reception@discoverybay.com.au | discoverybay.com.au



Artist Demonstrations

Look for the palette symbol  next to venues that are holding demonstrations or workshops.

1 MANJIMUP ARTS HUB INC

See daily demonstrations given by our Hub Artists, such as geli printing, spinning, Mosaics, Watercolour, linocutting, Textiles, and suncatcher making. Demonstrations encourage hands on, so ask and be prepared to join in.

Watch our Website, Facebook and Instagram for announcement of our two Workshops – **Sunday afternoons – 29th September and 13th October**

10 LAVENDER BEE

Sunday 22nd and 29th September, from 10.30am - Textured textile weaving
Mixed Media on Canvas – “Artist at work” station set up **daily from 10am**

11 ART CHATTER GALLERY

We have an artist painting in the gallery/studio **everyday**

22 THE MILL ART GROUP DENMARK

Oil, acrylic, water colour, alcohol ink.
Sunday 22nd September 11am to 1pm,
Wednesday 25th September 1 to 3pm,
Saturday 28th September 11am to 1pm,
Wednesday October 1st 1 to 3pm

31 MELEAH FARRELL PHOTOGRAPHY STUDIO | GALLERY

Saturdays 21st, 28th September and 5th October, 10.30 - 11.30am - Pottery Wheel Throwing Demonstration

32 PHOENIX FINE ARTS

Wednesday 2nd October, 2pm - Helen Heerey: Marine Life in Watercolour
Monday 30th September, 11am-2pm - Abigail Parker: Watercolour Wildlife

36 ALBANY ABORIGINAL CORPORATION

Thursday 26 September, 11am to 12pm - Traditional Tool Making Demonstration

39 DESIGNER DIRT

See our website for details

40 BROWN & THE BEARD

Sunday 22nd September, from 10.30am - Barry Mackie: “Painting an impressionist landscape with a limited palette”. We’ll also have an artist painting in the Handsyde’s Cafe’s - HAY SHED everyday during the Art Trail. You can sit and watch or converse with the artists.

44 ABIGAIL PARKER

Working on paintings in progress - wildlife and botanical artworks in watercolours and oils.
Sunday 22nd and 29th September, 10.30am to 12.30pm - Wildlife in Watercolour.
Saturday 5th October, 10.30am to 12.30pm - Botanicals in Watercolour

45 RON BAKER AND MARJAN BAKHTIARIKISH

Tuesday 1st October, 1.30 to 4 pm - Portrait from life
Free to attend 0473 386 243

47 LOWER KALGAN ARTISTS

Continual demonstrations

49 FELTERS IN THE GREAT SOUTHERN

Demonstration of basic felting on **all days**

54 BUTTER FACTORY STUDIOS

Sunday 29th September, 1 to 3pm - Artist talk

60 ADVENTURES IN WOOD

I usually make something during the trail. I don’t know what it will be, but it will be interesting

61 THE ATELIER AT BEAUMARIS

Kylie Porter will be painting onsite most days

65 NICCI DANIELE ART STUDIO

I will be working on sculptures or painting throughout the art trail and demonstrating how I work

69 ALBANY ART GROUP

Wednesday 25th September, 1 - 3.30pm - Helen Heerey: Painting from Nature in Watercolour
Friday 27th September, 10am - 12.30pm - Suzanne De Landgraft Moore: Pastel Landscapes
Tuesday 1st October, 10am - 12.30pm - Zoe Butler: Acrylics and Inks
Thursday 3rd October, 10am to 12.30pm - Abigail Parker: Botanical Art
Saturday 5th October, 10am to 12.30pm - Lee Garvey: Portrait in Oils

70 SCOUT SEAS

The Scout Seas Studio is an active workspace/workshop as well as store-front. Visitors are welcome to view and discuss the range of projects underway

71 DEO GLORIA ART GROUP

No Specific times but an artist will be working regularly

Venue Workshops

1 MANJIMUP ARTS HUB INC

Watch daily demonstrations given by our Hub Artists, such as geli printing, spinning, mosaics, watercolour, linocutting, textiles, and suncatcher making. Most of these demonstrations encourage hands on, so ask and be prepared to join in.

Follow our Website, Facebook and Instagram for more details. **Sunday afternoons – 29th September and 13th October**

2 MUSE SHALA

Follow my website for details
www.amyjadedwyer.com/muse-shala

8 SOBRANE

Sunday 29th September - High tea fashion parade. Check out our socials and website for booking details

10 LAVENDER BEE

Draw, Paint, Collage and Print postcard minis on the closing day of our exhibition. Swap and share finished artwork, making memories, and meet and greet our exhibiting artists. Join us on Sunday 6th October 10:30am for a fun-filled morning. **BOOK HERE** <https://events.humanitix.com/draw-paint-collage-and-print>

12 THE CHEEKY PARROT

Sunday 29th September, 10am - 3pm - Wet Felting Workshop - \$75pp. All materials/resources provided to create a stunning scarf. **BYO lunch/snacks/ drinks** Coffee & Tea provided. Bookings: Call Callie 0421 959 170

26 PHILLIPS BROOK ESTATE (26 - 29)

Saturday 5th October, 1pm to 3pm - "Feast with Friends" Long Table Banquet, \$40pp. Bookings: <https://events.humanitix.com/long-table-lunch-saturday-5th-of-october>

Sunday 6th October, 1pm to 3pm - "Feast with Friends" Long Table Banquet, \$40pp. Bookings: <https://events.humanitix.com/copy-of-long-table-lunch-saturday-6th-of-october>

Monday 30th September, 12 to 4pm -

"Paint & Sip with Ebony Harris", \$150pp. Bookings: <https://events.humanitix.com/paint-and-sip-with-ebony-harris>

36 ALBANY ABORIGINAL CORPORATION

In Conversation with an Elder

Saturday 21st September, 11am to 12pm. Bookings: <https://events.humanitix.com/conversation-with-an-elder>

Saturday 5th October, 11am to 12pm. Bookings: <https://events.humanitix.com/copy-of-conversation-with-an-elder>

\$5 (includes morning tea).

37 THE VILLAGE

Sunday 22nd September, 1pm to 3pm - Botanical Imprinting Ceramics Workshop. Bookings: <https://events.humanitix.com/pottery-botanical-imprinting>

Saturday 28th September, 10am to 12pm - Wild Wood Whittling. Bookings: <https://events.humanitix.com/wood-whittling-art-trail-2024>

38 CAROL HOPE

Sunday 22nd September, 2.30pm to 4.30pm Gelli printing workshop - discover textures, patterns and layering techniques to create an artwork. Further details and bookings via the website - www.albanyartworkshops.com.au

39 DESIGNER DIRT

See our website for details

65 NICCI DANIELE ART STUDIO

Sunday 29th September, 10am to 12.30pm - Sculpture Workshop. See www.niccidaniele.com.au for full details.

66 FLOURISH ECLECTIC

Sunday 22nd September and Saturday 28th September - The "Inspire Studio" will also be hosting a floral art workshop. Please check out our socials and website for booking details

VENUE OPENING EVENTS



WEDNESDAY 18TH SEPTEMBER

OFFICIAL OPENING 2024 SOUTHERN ART & CRAFT TRAIL

4pm, Hilton Garden Inn, Albany

THURSDAY 19TH SEPTEMBER

47 LOWER KALGAN ARTISTS

6pm to 8pm, Lower Kalgan Hall

FRIDAY 20TH SEPTEMBER

9 MITCHELL HOUSE ARTS CENTRE

6pm to 8pm, 44 Albany Highway, Mount Barker

38 CAROL HOPE | ALBANY ART CAFÉ

6.30pm to 8.30pm, 15 Townsend St, Lockyer

39 DESIGNER DIRT CREATIVES

Ticketed, 2a/230 Chester Pass Road

69 ALBANY ART GROUP

6pm to 8pm Town Hall, York St, Albany

74 COMMUNITY LIVING ASSOCIATION

11am, 56 Cockburn Rd, Albany

SATURDAY 21ST SEPTEMBER

10 LAVENDER BEE

3pm to 4.30pm, 26 Langton Road, Mount Barker

11 ART CHATTER GALLERY

1.30pm to 2.30pm, 4 Langton Rd, Mount Barker

23 DENMARK VISITOR CENTRE

10am, 73 South Coast Hwy, Denmark

37 THE VILLAGE

3pm to 6pm, Albany Community Garden, Humphreys Street, Lockyer

41 COCREATIVES

6pm to 8pm, 20 Talyuberlup way, Lange

50 VANCOUVER ARTS CENTRE 50-54

2pm, 85 Vancouver St, Albany

FRIDAY 27TH SEPTEMBER

26 PHILLIPS BROOK ESTATE 26-29

4pm to 6pm, \$15 per ticket, 118 Redmond Hay-River Road, Redmond

SUNDAY 29TH SEPTEMBER

31 MELEAH FARRELL PHOTOGRAPHY STUDIO | GALLERY

2pm to 5pm, 45 Forsyth Glade, Kronkup



MUSEUM OF
THE GREAT
SOUTHERN

Explore expressive pop-up
artworks and discover
the region's natural and
social history.

FREE ENTRY | OPEN DAILY | 10AM – 4PM

visit.museum.wa.gov.au/greatsouthern

*Some programs and events may attract a fee.
Image: Luke Riley Creative



Community Bank · Albany

Better banking.
Big impact.

Find out more. Call us on 0898 421 911 or search Bendigo Bank
Centennial Park.

 Bendigo Bank

Bendigo and Adelaide Bank Limited ABN 11 068 049 178, AFSL (A16324) (OUT_38748446) 10/07/2024



SAVE THE DATE

ALBANY CHRISTMAS
TWILIGHT MARKETS

SATURDAY 30 NOVEMBER
FRIDAY 13 DECEMBER

CONTACT ANNE 0498 194 222 | ECLIPSE.EVENTSWA@GMAIL.COM



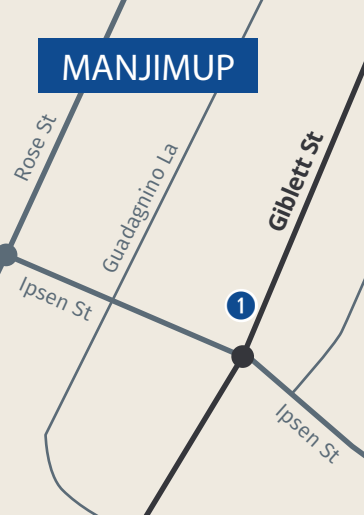
ECLIPSE
EVENTS

ART TRAIL COMMUNITY WORKSHOPS

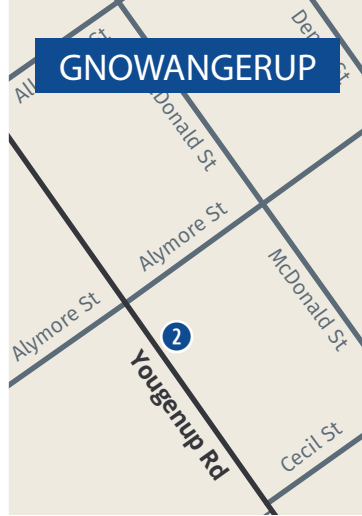
VENUE	TITLE	DESCRIPTION
Museum of the Great Southern	Kerrie Argent Natural Dying Paper (botanical print) & Book Binding	At these 2-day workshops you will learn the skills of dying paper naturally and forming hand bound books
	Kerrie Argent Natural Dying Paper (botanical print) & Book Binding	At these 2-day workshops you will learn the skills of dying paper naturally and forming hand bound books
Albany Aboriginal Corporation Centre	Shadow Puppetry Community Open Day Showcase	Drop in and see artists at work creating shadow puppetry for a performance later in the year
	Basics of Shadow Puppetry Workshops	Learn the art of shadow puppetry using silhouettes and light. Craft your own puppets, experiment with light sources, and bring stories to life. This hands-on session combines creativity and storytelling
Denmark Art Club	Fairy Wren Painting	Learn to use Watercolours that capture our amazing characters of the bird world - Fairy Wrens
	Ocean Creatures Painting	Learn to use Watercolours that capture our amazing oceanic life both above and under the sea
	Native Botanical Painting & Pressed Flower Collage	Mixed media workshop sharing the skills of combining mediums
	Charcoal Drawing	Suitable for all stages of artistic development. Explore age old charcoal drawing techniques
	Lamp Making	Make your very own Turkish mosaic lamp or two Tea light candle holders. Our experienced instructor will guide you through the process, teaching you the techniques to create intricate designs with colourful pieces of glass
Lavender Bee, Mt Barker	Acrylic Paint Mediums	Each participant will have the opportunity to experiment with different texture mediums to create a unique abstract painting on a mini canvas

DATE AND TIME	INFO	BOOKINGS
Tuesday 24 September & Thursday 26 September 10am - 3pm	Cost \$40 Workshops limited to 12. Minimum age 14 years	https://events.humanitix.com/natural-dying-paper-botanical-print-and-book-binding
Wednesday 25 September & Friday 27 September 10am - 3pm	Cost \$40 Workshops limited to 12. Minimum age 14 years	https://events.humanitix.com/natural-dying-paper-botanical-print-and-book-binding-2
Wednesday 25 September 10am - 3pm	Gold Coin Children must be accompanied by an adult	https://events.humanitix.com/shadow-puppetry-community-open-day-showcase
Tuesday 1 October 10am - 12pm Thursday 3 October 10am - 12pm	Cost - \$10 Workshop limited to 12. Minimum age 10 years	https://events.humanitix.com/basics-of-shadow-puppetry/tickets
Saturday 21st September 10am - 12pm	Cost - \$35 Minimum age 8 years	https://events.humanitix.com/fairy-wren-painting
Sunday 22nd September 10am - 12pm	Cost - \$35 Minimum age 8 years	https://events.humanitix.com/ocean-creatures-painting
Monday 23rd September 10am - 12pm	Cost - \$35 Minimum age 8 years	https://events.humanitix.com/native-botanical-painting-and-presses-flower-collage
Saturday 28th September 10am - 12.30pm	Cost - \$50 Minimum age 10 years	https://events.humanitix.com/charcoal-drawing-with-kendal
Sunday 29th September 10am - 12.30pm	Cost \$80-\$120 Minimum age 10 years	https://events.humanitix.com/lamp-making
Friday 27th September 11am onwards	Free Workshop limited to 10 people. Bookings required	https://events.humanitix.com/acrylic-paint-mediums

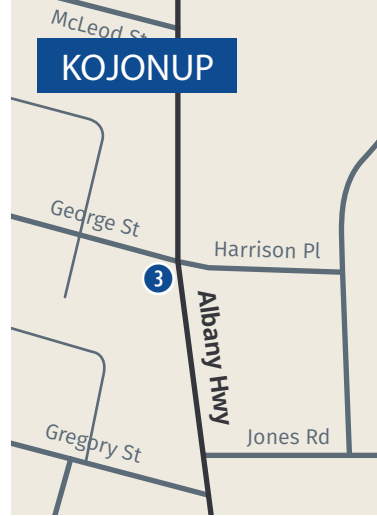
MANJIMUP



GNOWANGERUP



KOJONUP



MANJIMUP ARTS HUB INC

Painting, Jewellery, Printmaking, Metalwork, Textiles, Ceramics, Woodwork, Photography, Mixed Media, Glasswork, Wearable Art Other

39 Giblett St, Manjimup WA 6258
0438 980 256

1



Home of great art, creations and collections from the Manjimup and Southern Forests Region. Handmade and very beautiful, these works are Artisan crafted and displayed for sale. Join a Workshop, or visit and watch artist demonstrations. For more details visit our website, facebook or instagram pages. In central Manjimup, find us on the roundabout corner of Giblett St and Ipsen St

Open every day 9.30am to 4pm



SAT	SUN	MON	TUE	WED	THU	FRI	SAT	SUN	MON	TUE	WED	THU	FRI	SAT	SUN
21	22	23	24	25	26	27	28	29	30	1	2	3	4	5	6



MUSE SHALA

Painting, Jewellery, Textiles, Ceramics, Photography, Printmaking

46 Yougenup Rd, Gnowangerup WA 6335
0407 918 891

2



YOU THE MUSE

Bringing together those inspired by the spark of an idea in the dark of night, or bright sunlight that wakes your soul and leads you to your art.

Crafted by hands and hearts of the Great Southern. Workshops similarly inspired - dates updated on our website. On the Main Street of Gnowangerup by the park.

Open days 10am to 4pm



SAT	SUN	MON	TUE	WED	THU	FRI	SAT	SUN	MON	TUE	WED	THU	FRI	SAT	SUN
21	22	23	24	25	26	27	28	29	30	1	2	3	4	5	6



GALLERY AURA

Painting, Jewellery, Glasswork, Mixed Media

Gallery Aura
100 Albany Hwy, Kojonup WA 6395
0428 310 323

Discover our thoughtfully curated exhibition showcasing the talents of West Australian artists. Explore an extensive array of subjects and media, from captivating wall art to exquisite jewellery and innovative mixed media creations.

Located on Albany Hwy in the heart of Kojonup, adjacent to the post office and opposite the Shire Hall. We are on the left when travelling from Albany.

Open every day 10am to 5pm



SAT	SUN	MON	TUE	WED	THU	FRI	SAT	SUN	MON	TUE	WED	THU	FRI	SAT	SUN
21	22	23	24	25	26	27	28	29	30	1	2	3	4	5	6

3

a proud supporter of the arts

southerly

magazine

Wayne Harrington
Ph: 0409 881 790
E: wayne@southerlymag.com.au

MT BARKER

4

Albany Hwy

Muir Hwy

Wooenellup Rd

← 14 10Km

Albany Hwy

McDonald Ave

Lowood Rd

5 6

Ingoldby St

Muir St

7

8

9

Ormond Rd

Langton Rd

10

11

12

Osborne Rd

Deanne St

Booth St

Martin St

Marmion St

Montem St

Mt Barker Rd

Lowood Rd

Oatlands Rd

13

Mondurup Rd



THE STATION GALLERY MOUNT BARKER

Painting

4

Mount Barker Visitor Centre
622 Albany Hwy, Mount Barker WA 6324
0458 681 708

100 YEARS OF MOUNT BARKER HISTORY This year marks 100 years since the Mount Barker Railway Station buildings were officially opened in 1924. Our Art Trail exhibit offers art lovers the opportunity to enjoy a selection of local art inspired by the station buildings and the stories of Mount Barker's intriguing history.

On Albany Hwy, opposite the Mitchell House Arts Centre.

Open every day 9am to 1pm



SAT	SUN	MON	TUE	WED	THU	FRI	SAT	SUN	MON	TUE	WED	THU	FRI	SAT	SUN
21	22	23	24	25	26	27	28	29	30	1	2	3	4	5	6



ELIZABETH JENKINS

Textiles

5

35B Ingoldby St, Mount Barker WA 6324
0438 443 180

Delicate and fascinating, Elizabeth uses free machine embroidery to create 3D works inspired by the interesting shapes and colours of West Australian fungi and tree bark.

From Albany Hwy heading north, turn right onto Ormond Rd, turn left onto Dean St and right onto Ingoldby St, venue is on your left.

Open days 10am to 4pm



SAT	SUN	MON	TUE	WED	THU	FRI	SAT	SUN	MON	TUE	WED	THU	FRI	SAT	SUN
21	22	23	24	25	26	27	28	29	30	1	2	3	4	5	6



BRONTE WILKES

Painting, Mixed Media

6

35B Ingoldby St, Mount Barker WA 6324
0438 443 180

BUSH WALK Experience the vitality of Australian flora through joyful compositions by artist Bronte Wilkes. Engage your senses in this immersive exhibition as you experience the rich sights, sounds and smells of the bush.

From Albany Hwy heading north, turn right onto Ormond Rd, turn left onto Dean St and right onto Ingoldby St, venue is on your left.

Open days 10am to 4pm



SAT	SUN	MON	TUE	WED	THU	FRI	SAT	SUN	MON	TUE	WED	THU	FRI	SAT	SUN
21	22	23	24	25	26	27	28	29	30	1	2	3	4	5	6



LITTLE BIT OF BARKER

Painting

7

11 Lowood Rd, Mount Barker WA 6324
0447 843 559

A TASTE OF MOUNTAIN COUNTRY Paintings inspired by our ancient mountain landscapes, rich culture, flora and fauna and beautiful farmlands.

From Albany Hwy heading north, turn left onto Memorial Rd then left at the roundabout onto Lowood Rd. Venue is on the right.

Open weekdays 7.30am to 3.00pm, weekends 8.30am to 3.00pm,
Friday & Saturday evenings 5.00pm to 8.00pm



SAT	SUN	MON	TUE	WED	THU	FRI	SAT	SUN	MON	TUE	WED	THU	FRI	SAT	SUN
21	22	23	24	25	26	27	28	29	30	1	2	3	4	5	6



SOBRANE

Painting, Drawing, Street Art

8

21 Lowood Rd Mount Barker, WA 6324
0438 023 394

Renowned muralist and international artist, Sobrane has an extensive career in painting and small business resulting in two business awards. Her retail outlet is not to be missed! Experience the massive street art around her 100 year old bank and retail gallery inside.

From Albany Hwy heading north, turn left onto Lowood Rd, venue is 1km ahead on the left.

Open days 10am to 3pm



SAT	SUN	MON	TUE	WED	THU	FRI	SAT	SUN	MON	TUE	WED	THU	FRI	SAT	SUN
21	22	23	24	25	26	27	28	29	30	1	2	3	4	5	6



MITCHELL HOUSE ARTS CENTRE

Painting, Ceramics, Mixed Media, Sculpture, Drawing

9

42 Albany Hwy,
Mount Barker WA 6324
0408 050 635

COUNTRY LIFE Mt Barker country life as seen by our artists with inspiration coming from the mountain ranges, farming life, rolling fields, the isolation or is it peace and tranquillity?

Mitchell House is the pink building on the corner of Ormond Rd and Albany Hwy opposite the Mt Barker Visitor Centre (old railway station).

Open every day 10am to 4.30pm



SAT	SUN	MON	TUE	WED	THU	FRI	SAT	SUN	MON	TUE	WED	THU	FRI	SAT	SUN
21	22	23	24	25	26	27	28	29	30	1	2	3	4	5	6



LAVENDER BEE

Sculpture, Painting, Printmaking, Drawing, Textiles, Mixed Media

2/26 Langton Rd, Mount Barker WA 6324
0439 791 530

10



BEAUTIFUL DAYS Unique artwork, prints and gifts proudly presented by our group of passionate local artists, in this lovely retail store. Ample parking available.

Travelling south on Albany Hwy towards Mount Barker, turn right onto Muir Hwy at the roundabout. Turn left onto Taylor rd, then turn left onto Langton Rd. Look for the lavender-coloured shop on the right side.

Open weekdays 9am to 4:30pm, weekends 9am to 2pm



SAT	SUN	MON	TUE	WED	THU	FRI	SAT	SUN	MON	TUE	WED	THU	FRI	SAT	SUN
21	22	23	24	25	26	27	28	29	30	1	2	3	4	5	6



ART CHATTER GALLERY

Painting

4 Langton Rd, Mount Barker WA 6324
0418 823 085

11



ARTIFICE IN OILS celebrates individual expression of our collective love of oil painting. We cover a wide range of topics, scenes and insights into the artists imagination, including everything from representational to abstract, sublime to the ridiculous and many points along that particular spectrum.

At the roundabout opposite the Shire, turn onto Langton Rd, we're inside Strike-Me-Pink Garden Gallery.

Open days 8.30am to 3.30pm



SAT	SUN	MON	TUE	WED	THU	FRI	SAT	SUN	MON	TUE	WED	THU	FRI	SAT	SUN
21	22	23	24	25	26	27	28	29	30	1	2	3	4	5	6



Lavender Bee

ARTS - CRAFTS - HOBBIES

Bring your creative ideas to life. Quality supplies for professionals & hobby enthusiasts. Affordable products for your next project!

Workshops - Arty Parties - Yarn - Sewing - Painting Supplies & More

A: 2/26 Langton Road Mt Barker WA, 6324 - P: 0439 791 530

lavenderbee.com.au



THE CHEEKY PARROT GALLERY

Sculpture, Painting, Textiles, Photography, Ceramics, Mixed Media, Drawing

The Cheeky Parrot Gallery
2 Mount Barker Rd, Mount Barker WA 6324
0421 959 170

12



Heartening and inspiring interpretations capturing the theme 5 by local artists Christine Baker, Jude Clarke, Fiona Glen, Merveena Reynolds and Caroline Smith. Add this to your list!

From town centre travel west on Langton Rd, take first left onto Mount Barker Rd. Gallery is on left (inside The Art Shed) set back from road, directly opposite Red Cross shop.

Open days 10am to 4pm



SAT	SUN	MON	TUE	WED	THU	FRI	SAT	SUN	MON	TUE	WED	THU	FRI	SAT	SUN
21	22	23	24	25	26	27	28	29	30	1	2	3	4	5	6



ABI JASPER

Painting

59 Mondurup St, Mount Barker, WA 6324
0432 870 421

13

Two stunning series; both unique and impactful. 'Pisces', a series of large oil paintings depicting the narrative of Pisces through bold colour and symbolism. 'So Barker...' a series of intimate acrylic paintings depicting the quiet, atmospheric afternoons of a rural town.

From Albany Hwy heading North, turn left onto Lowood Rd, turn left onto Mondurup St. Turn right into venue.

Open days 10am to 4pm

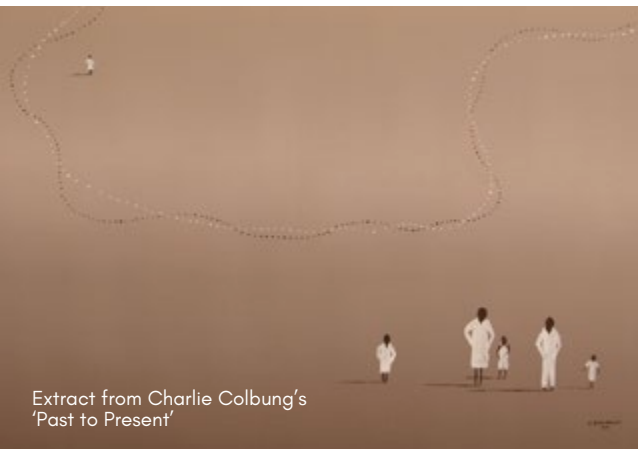


SAT	SUN	MON	TUE	WED	THU	FRI	SAT	SUN	MON	TUE	WED	THU	FRI	SAT	SUN
21	22	23	24	25	26	27	28	29	30	1	2	3	4	5	6



Home of the Shire of Plantagenet Art Collection and Mural Trail

www.plantagenet.wa.gov.au



Extract from Charlie Colbung's 'Past to Present'



OLIVER COAKLEY

Painting

14923 Muir Hwy, Mount Barker WA 6324
0474 519 166

14

IT'S ON SIGHT

Oliver's work is representational in terms of subject matter but its success hinges on an abstract quality derived from observation of light and built around bold, efficient, gestural strokes.

Travelling north on Albany Hwy in Mount Barker, turn left onto Muir Hwy. After 11km the venue is on the right.

Open weekdays 10am to 5pm, weekends 11am to 4pm



SAT	SUN	MON	TUE	WED	THU	FRI	SAT	SUN	MON	TUE	WED	THU	FRI	SAT	SUN
21	22	23	24	25	26	27	28	29	30	1	2	3	4	5	6

albany
tours

ADVENTURE
with us to the Granite Skywalk

Book direct
busybluebus.com.au

WEST CAPE HOWE WINES



Tel: 08 9892 1444

Proudly supporting the

Southern Art+Craft

Trail

Visit our Cellar Door 11km west of Mount Barker open 7 days/week.

Mon - Fri 10am - 5pm Sat/Sun 11am - 4pm

www.westcapehowewines.com.au

DENMARK





CATHERINE BROOKER

Painting, Drawing, Printmaking, Other

15

283 Mount Lindesay Rd, Scotsdale WA 6333
0427 180 766

Catherine's varied studio display includes intricate pencil drawings, vibrant lino-prints and paintings inspired by the surrounding forest and coastal landscapes of the local area.

Travel west on Scotsdale Rd, turn right onto Mount Lindesay Rd and continue on for just under 3km. The studio is the blue building on the left. The entrance for parking is 20m further on.

Open days 10am to 4pm. Closed days by appointment only.



SAT	SUN	MON	TUE	WED	THU	FRI	SAT	SUN	MON	TUE	WED	THU	FRI	SAT	SUN
21	22	23	24	25	26	27	28	29	30	1	2	3	4	5	6



SEIRAH WOODWARD

Painting

16

Forest Hill Wines Cellar Door
1564 South Coast Hwy, Denmark WA 6333
0419 605 781

EMBRACE

All that surrounds us.

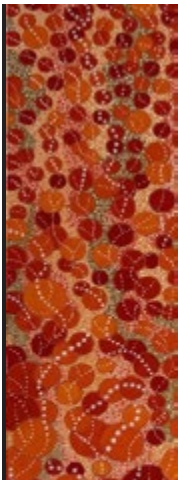
A series of unique contemporary artworks taking inspiration from the patterns, textures and colours of the environment that surrounds us, both the natural and the man made.

Forest Hill Wines Cellar door is located approximately 5.5km west of Denmark, turn right into the winery driveway and follow the signs.

Open every day 10.30am to 4.30pm



SAT	SUN	MON	TUE	WED	THU	FRI	SAT	SUN	MON	TUE	WED	THU	FRI	SAT	SUN
21	22	23	24	25	26	27	28	29	30	1	2	3	4	5	6



The Art
of
Wine

Forest Hill Wines

1564 South Coast Hwy

Denmark WA

9848 2399

cellardoor@foresthillwines.com.au



MARION NELSON

Painting, Printmaking, Mixed Media, Origami

17

Chimes Spa Retreat
467 Mt Shadforth Rd, Denmark WA 6333
0438 409 330

LIGHT AND SHADOW

Experience an exquisite collection of original and unique artworks that feature the captivating interplay of light and shadow.

From Denmark town centre, turn right into Strickland St and immediately turn left onto Mount Shadforth Rd. Continue for 4.7km and Chimes Spa Retreat will be on your left.

Open every day 11am to 5pm



SAT	SUN	MON	TUE	WED	THU	FRI	SAT	SUN	MON	TUE	WED	THU	FRI	SAT	SUN
21	22	23	24	25	26	27	28	29	30	1	2	3	4	5	6



CAROL ANN O'CONNOR

Painting, Mixed Media

18

Sisters of Eve Art Gallery
251 Mt Shadforth Rd, Denmark WA 6333
0419 346 232

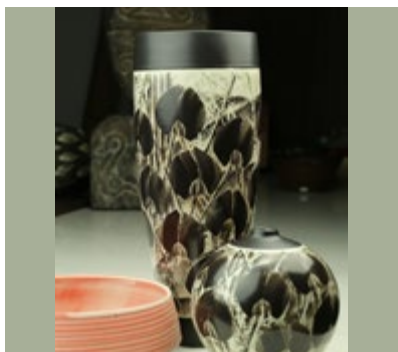
A selection of original paintings also available as a fine art print, and a large selection of custom framed prints embellished with gemstones and crystals, with original decorative border on mount.

Turn left onto Mount Shadforth Rd at the big IGA, past Mrs Jones Cafe. Continue up the hill for 2.5km, the gallery is on the left and well sign posted.

Open days 10am to 4pm



SAT	SUN	MON	TUE	WED	THU	FRI	SAT	SUN	MON	TUE	WED	THU	FRI	SAT	SUN
21	22	23	24	25	26	27	28	29	30	1	2	3	4	5	6



JONATHAN HOOK STUDIO CERAMICS

Painting, Ceramics

19

Jonathan Hook Studio Gallery
Lot 109 Lantzke Rd, Scotsdale WA 6333
0481 099 125

Great Southern landscapes are a continuing theme in the two mediums I'm exploring, painting and ceramics. New works will be unveiled in the 2024 Art Trail.

Venue is located on Lantzke Rd, entered via Kearsley Rd off Mt Shadforth Rd, or off Redman Rd via Scotsdale Rd.

Open weekdays 10am to 5pm, weekends 12pm to 4pm



SAT	SUN	MON	TUE	WED	THU	FRI	SAT	SUN	MON	TUE	WED	THU	FRI	SAT	SUN
21	22	23	24	25	26	27	28	29	30	1	2	3	4	5	6



JUNE SMITH

Painting

4 Wishart Pl, Denmark WA 6333
08 9848 3890

20

HORIZON: ELEGANT, EXOTIC AND HIGHLY DESIRABLE

Beautiful works to brighten your day making your inner child smile. An eclectic mix of paintings – still life, landscapes, figures and florals plus cards and prints.

From Denmark, travel Mt. Shadforth Rd for 1km. Turn right onto Kearsley Rd, then turn right onto Wishart Pl. The venue is first on the right.

Open days 10am to 4pm



SAT	SUN	MON	TUE	WED	THU	FRI	SAT	SUN	MON	TUE	WED	THU	FRI	SAT	SUN
21	22	23	24	25	26	27	28	29	30	31	1	3	4	5	6



NELL PARKER

Photography

109 Scotsdale Rd, Denmark WA 6333
0422 519 819

21

NATURA MORTA + MONOCHROMATIC

Exhibition of Fine Art Limited Edition Photography. Images are made with a unique collection of objects and different tones of one colour, highlighting the light, tonal subtlety and translucency as they merge into each other.

From Mt Shadforth Rd, turn right onto Scotsdale Rd, travel 1 km and Nells Studio is on the left just past the hospital.

Open days 10am to 4pm. Closed days by appointment only



SAT	SUN	MON	TUE	WED	THU	FRI	SAT	SUN	MON	TUE	WED	THU	FRI	SAT	SUN
21	22	23	24	25	26	27	28	29	30	31	1	2	4	5	6



3 Toll Place
Albany WA
08 9872 9200



Scan for
more information

Together
& Co.

Open Daily
Full Buffet Breakfast &
Ala Carte Dinner

OPEN TO THE PUBLIC!

Refreshing from the first hello





THE MILL ART GROUP

Oils, Acrylics, Pastel, Watercolour, Photography, Fibre Art, Pottery, Ink art, Linocut, Origami, Resin, Mixed Media

CRC Gallery
2a Strickland St, Denmark WA 6333
0428 711 074

22



Very high standard and diverse range of art, describes the Mill Art Group. Beautifully presented in the CRC gallery. Everyone is welcome. From Albany, travel South Coast Hwy to Denmark, cross the bridge, second right onto Strickland St. Look for the black, orange and white signs. From Walpole, travel South Coast Hwy, left after BP onto Strickland St. Follow the signs.

Open every day 10am to 4 pm



SAT	SUN	MON	TUE	WED	THU	FRI	SAT	SUN	MON	TUE	WED	THU	FRI	SAT	SUN
21	22	23	24	25	26	27	28	29	30	1	2	3	4	5	6



DENMARK VISITOR CENTRE GALLERY

Mixed Media, Sculpture, Ceramics, Textiles

Denmark Visitor Centre
73 South Coast Hwy, Denmark WA 6333
08 9848 2065

23

Sue Noakes and Jenny Wilson have taken a FLIGHT OF FANCY into the world of winged creatures.

From real to imagined, from endangered to commonplace, this exhibition featuring painting, sculpture, ceramics, textiles, and mixed media will leave you both smiling and thoughtful.

Venue is located on the corner of South Coast Hwy and Ocean Beach Rd, just west of the town centre.

Open every day 9.30am to 3.30pm



SAT	SUN	MON	TUE	WED	THU	FRI	SAT	SUN	MON	TUE	WED	THU	FRI	SAT	SUN
21	22	23	24	25	26	27	28	29	30	1	2	3	4	5	6



ELLIS PEARSON

Painting

27 Harlequin St, Denmark WA 6333
0466 803 025

24

STILLNESS MOVES

Large colourful oil paintings on canvas in a beautiful studio farm setting.

From South Coast Hwy turn down Ocean Beach Rd, after 500m turn right into Harlequin, travel to the end, turn left, 50 meters to enter farm gate on the left. Follow directions to the studio and gallery on the farm.

Open days 10am to 4pm



SAT	SUN	MON	TUE	WED	THU	FRI	SAT	SUN	MON	TUE	WED	THU	FRI	SAT	SUN
21	22	23	24	25	26	27	28	29	30	1	2	3	4	5	6



CHRISSE GREGORY

Textiles, Photography, Mixed Media

Boston Brewery
678 South Coast Hwy, Hay WA 6333
0477 037 881

25

This collection of work is inspired by patterns in nature, found in both seascapes and landscapes within the Great Southern region, and also from further afield.

A combination of photography, hand-dyed fabrics and mixed media are used to create these works, displayed in the cellar door area.

Travelling from Denmark town towards Albany, venue is 4km drive on the left.

Open days 11.30am to 8pm



SAT	SUN	MON	TUE	WED	THU	FRI	SAT	SUN	MON	TUE	WED	THU	FRI	SAT	SUN
21	22	23	24	25	26	27	28	29	30	1	2	3	4	5	6



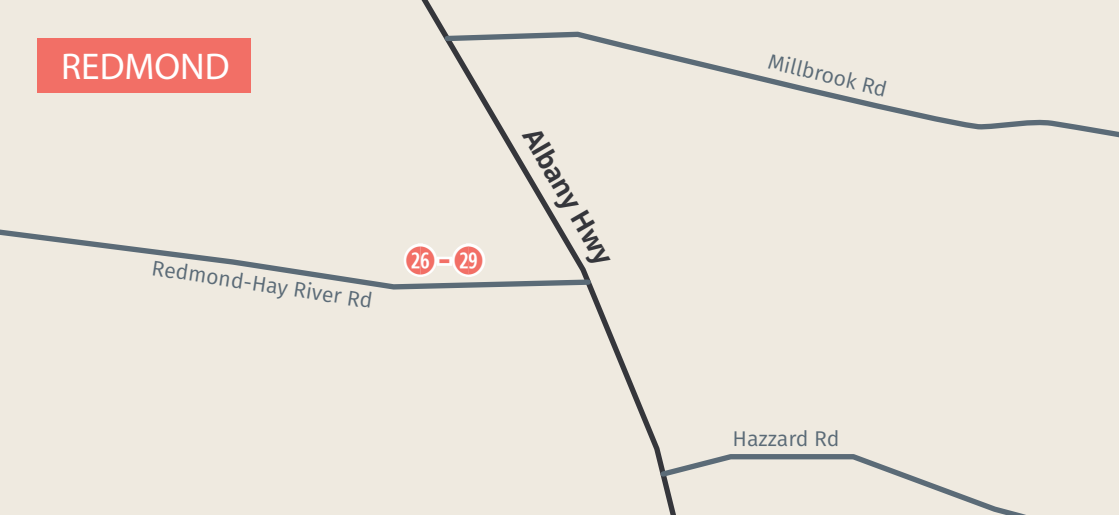
HUGE RANGE OF HOME, GARDEN + GIFTWARE

Sculptures to order
Over 20 local artisans
Windspinners + pots
Scarves, jewellery,
bodycare + sunscreen
Coffee
Relaxed shopping + easy parking
Open 7 days

designerdirtwa.com.au
2a/230 Chester Pass Rd,
Albany



REDMOND



TARYN SMALLWOOD

Painting

Phillips Brook Estate
118 Redmond Hay-River Rd, Redmond WA 6327
0429 193 118



Bright, detailed and abstract collection of paintings full of native flora. I take inspiration from where I live in the country and all the beautiful flora I'm surrounded by.

From Albany, travel north on Albany Hwy for 16km, left onto Redmond - Hay River Rd, venue is on the right.

Open days 12pm to 4pm



SAT	SUN	MON	TUE	WED	THU	FRI	SAT	SUN	MON	TUE	WED	THU	FRI	SAT	SUN
X	X	X	X	X	X	27	28	29	30	1	2	3	4	5	6



KATE SAMIOTIS STUDIO

Ceramics

Phillips Brook Estate
118 Redmond-Hay River Rd Redmond, WA 6327
0429 193 118



RAW

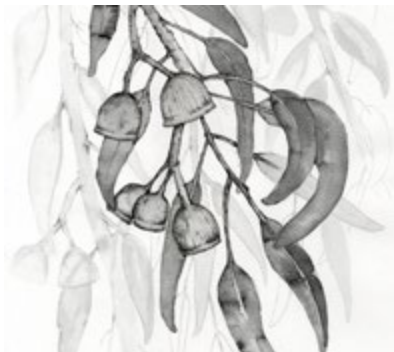
A mixed selection of wheel thrown and hand built stoneware. Inspiration has been drawn from nature, the Great Southern ocean coastline to the karri forests & vast native surrounding.

From Albany, travel north on Albany Hwy for 16km, left onto Redmond - Hay River Rd, venue is on the right.

Open days 12pm to 4pm



SAT	SUN	MON	TUE	WED	THU	FRI	SAT	SUN	MON	TUE	WED	THU	FRI	SAT	SUN
X	X	X	X	X	X	27	28	29	30	1	2	3	4	5	6



HAYLEY WISEWOULD

Painting, Drawing, Prints

Phillips Brook Estate
118 Redmond Hay-River Rd, Redmond WA 6330
0429 193 118

28



ART IN BLOOM

A collection of modern artworks inspired by the beauty and complexity of nature, through the use of intricate patterns and markings. The works can be enjoyed by art enthusiasts, collectors and nature lovers alike.

From Albany, travel north on Albany Hwy for 16km, left onto Redmond - Hay River Rd, venue is on the right.

Open days 12pm to 4pm



SAT	SUN	MON	TUE	WED	THU	FRI	SAT	SUN	MON	TUE	WED	THU	FRI	SAT	SUN
---	---	---	---	---	---	27	28	29	30	1	2	3	4	5	6



EBONY HARRIS

Painting, Prints

Phillips Brook Estate
118 Redmond Hay-River Rd, Redmond WA 6330
0429 193 118

29



BEAUTIFUL THINGS is a collection of paintings inspired by nature and the joy it brings. Contemporary artworks featuring bright, beautiful colours and various treasures from the natural world.

From Albany, travel north on Albany Hwy for 16km, left onto Redmond - Hay River Rd, venue is on the right.

Open days 12pm to 4pm



SAT	SUN	MON	TUE	WED	THU	FRI	SAT	SUN	MON	TUE	WED	THU	FRI	SAT	SUN
---	---	---	---	---	---	27	28	29	30	1	2	3	4	5	6

BROOMEHILL | TAMBELLUP | KOJONUP | KATANNING | CRANBROOK
GNOWANGERUP | WOODANILING | BORDEN | TENTERDEN
ROCKY GULLY | PINGRUP | ONGERUP | NYABING | MURADUP
FRANKLAND RIVER | BREMER BAY | JERRAMUNGUP

GREAT SOUTHERN, WESTERN AUSTRALIA

SEPTEMBER 21 - OCTOBER 20

GREATSOUTHERNTREASURES.COM.AU




JACKSONS

Supporting Creativity since 1955



WA's largest art supply store for beginners, hobbyists and professional artists alike.



PAINTING • DRAWING • SURFACES • CERAMICS • DESIGN • CRAFT • GIFTS

Visit our website for:

- Online shopping
- Upcoming demonstrations & workshops
- Store locations
- Custom canvas stretching
- and more!

www.jacksons.com.au



@jacksonsdrawingsupplies

KRONKUP / ELLEKER



OLD ELLEKER STUDIO

Sculpture, Painting, Mixed Media, Textiles, Metalwork, Botanical Contact Printing & Natural Dyeing

396 Old Elleker Rd, Cuthbert WA 6330
0409 030 869

30

Enjoy this collection of stunning nature based and upcycled artworks by Stephen Bristow-Baohm, Karen Quain and Kylie Riches. A range of sculptures, paintings and textiles that will excite and amaze you.

From Lower Denmark Rd, travel west 1.5km past George St, turn right onto Old Elleker Rd, then left into the venue.

Open every day 9am to 4pm



SAT	SUN	MON	TUE	WED	THU	FRI	SAT	SUN	MON	TUE	WED	THU	FRI	SAT	SUN
21	22	23	24	25	26	27	28	29	30	1	2	3	4	5	6



MELEAH FARRELL & NARELLE CLARK

Ceramics, Photography

Meleah Farrell Photography Studio/Gallery
45 Forsyth Glade, Kronkup WA 6330
0415 666 767

31



OF THE EARTH Seamlessly blending the visual narratives of Meleah's photography and Narelle's pottery, this exhibition explores each artist's deep-rooted connection to the land, echoing the textures, colours and beauty "Of the Earth".

From Albany, travel 24 kms on Lower Denmark Rd, left onto Hortin Rd, right at the T-section, left onto Forsyth Glade, and follow until the end.

Open every day 10am to 4pm



SAT	SUN	MON	TUE	WED	THU	FRI	SAT	SUN	MON	TUE	WED	THU	FRI	SAT	SUN
21	22	23	24	25	26	27	28	29	30	1	2	3	4	5	6

ALBANY

SURROUNDS





PHOENIX FINE ARTS

Painting, Drawing

Albany's Historic Whaling Station
81 Whaling Station Rd, Torndirrup WA 6330
0898 444 021

32



NATURE'S PALETTE Some of the best in the Albany art scene have joined forces to create a dynamic exhibition. Nine Albany talents explore a variety of media and genres, with all artwork for sale.

From Albany take Princess Royal Drive west for 2 km. Take the Frenchman Bay exit for 18 km then turn right on to Whaling Station Rd.

Open every day 9am to 5pm



SAT	SUN	MON	TUE	WED	THU	FRI	SAT	SUN	MON	TUE	WED	THU	FRI	SAT	SUN
21	22	23	24	25	26	27	28	29	30	1	2	3	4	5	6



MERRY ROBERTSON

Printmaking, Drawing, Mixed Media

The Merry Press Studio
23 Grove St East, Little Grove WA 6330
0414 703 433

33

FLORABOUND See beautiful new works featuring flora and hidden landscapes. Choose your favourite artworks from originals, prints, cards, handmade books and more, with all works inspired by nature. A percentage of sales is donated to environmental organisations.

Turn left into Spring St off Frenchman Bay Rd. At end turn left into Grove St East. Go up 3rd driveway on right.

Open days 10am to 4pm



SAT	SUN	MON	TUE	WED	THU	FRI	SAT	SUN	MON	TUE	WED	THU	FRI	SAT	SUN
21	22	23	24	25	26	27	28	29	30	1	2	3	4	5	6



SUE CODEE

Jewellery, Painting, Woodwork, Mixed Media, Papercut

The Merry Press Studio
23 Grove St East, Little Grove WA 6330

34

An exhibition of new work including vibrant new botanical imaginings in the forms of paintings, jewellery, and papercuts. Including iconic jarrah sculptural bowls and wall pieces, woodcuts, jarrah coasters and trivets- all in her intricate cut-out style.

Turn left into Spring St off Frenchman Bay Rd. At end turn left into Grove St East. Go up 3rd driveway on right.

Open days 10am to 4pm



SAT	SUN	MON	TUE	WED	THU	FRI	SAT	SUN	MON	TUE	WED	THU	FRI	SAT	SUN
21	22	23	24	25	26	27	28	29	30	1	2	3	4	5	6



LEN MCKENNA

Sculpture, Painting, Mixed Media

3 Melrose St, Mount Melville WA 6330
08 9800 0866

Exhibition includes high quality selected sculptural and mixed media works from West Australian artist Len McKenna. Len is an award winning professional artist with over 30 years experience.

Venue is in Albany central. Take Lion St off Albany Hw (high side) then turn right into Melrose St.

Open every day 10am to 4pm

35



SAT	SUN	MON	TUE	WED	THU	FRI	SAT	SUN	MON	TUE	WED	THU	FRI	SAT	SUN
21	22	23	24	25	26	27	28	29	30	1	2	3	4	5	6



Albany Aboriginal Corporation



SAT	SUN	MON	TUE	WED	THU	FRI	SAT	SUN	MON	TUE	WED	THU	FRI	SAT	SUN
21	22	23	24	25	26	27	28	29	30	1	2	3	4	5	6

ALBANY ABORIGINAL CORPORATION

Painting, Mixed Media

365 Serpentine Rd, Mt Melville WA 6330
0400 216 026

The Cultural Hub celebrates First Nations art and culture offering an immersive experience that, showcasing local artistic expressions. More than a gallery, it fosters community and cultural exchange, creating a dynamic space for collaboration and dialogue among artists and visitors.

Travel north on York St, turn left onto Serpentine Rd, the venue is the very last building on the left.

Open days 10am to 2pm

36



THE VILLAGE

Textiles, Ceramics, Woodwork, Printmaking, Sculpture, Mixed Media

Albany Community Garden
Lot 6685 Humphreys St, Lockyer WA 6330
0411 875 500

BOTANICAL TEA PARTY A garden tea party with blossom fairies, mice in vintage dresses and frogs in sweaters. Across multiple mediums, including pottery, linoprinting, whittling and felting, the artists explore the magic of the natural world.

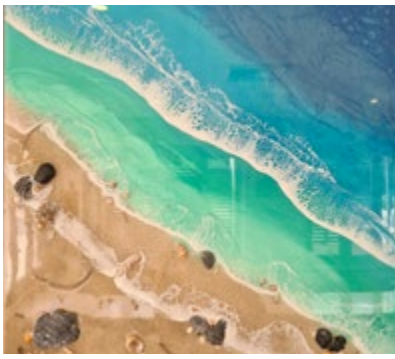
Exit the big roundabout west onto South Coast Hwy. After 1km turn left onto Humphreys St, after 300m turn left into the Community Garden.

Open days 10am to 3pm

37



SAT	SUN	MON	TUE	WED	THU	FRI	SAT	SUN	MON	TUE	WED	THU	FRI	SAT	SUN
21	22	23	24	25	26	27	28	29	30	1	2	3	4	5	6



CAROL HOPE

Printmaking, Painting, Drawing, Jewellery, Resin Art

Albany Art Cafe
15 Townsend St, Lockyer WA 6330
0483 822 197

38



FORMATIONS AND REFLECTIONS

A collection of artworks that focus on land, sea and cloud formations in our local area and the differing sun reflections throughout the day. I have experimented with various mediums and substrates to portray my interpretations.

From the big roundabout, exit onto South Coast Hwy. Travel 1km, turn left onto Townsend St. Venue is 300m on right.

Open weekdays 8.30am to 3.30pm, weekends and public holiday 9am to 2pm



SAT	SUN	MON	TUE	WED	THU	FRI	SAT	SUN	MON	TUE	WED	THU	FRI	SAT	SUN
21	22	23	24	25	26	27	28	29	30	1	2	3	4	5	6



DESIGNER DIRT CREATIVES

Sculpture, Jewellery, Printmaking, Metalwork, Glasswork, Textiles, Ceramics, Photography, Mixed Media

Designer Dirt
2a/230 Chester Pass Rd, Albany WA 6330
0427 448 481

39



Ian Michael, Jane Michael, Jodie Edwards, Karen Mackereth, Maria Serafin, Nev Clarke, Rachael Van Den Hoek, Ron Edwards, Tania Townsend.

Explore our Creatives' artwork and garden art, showcased in our one-of-a-kind setting!

From the big roundabout, take Chester Pass Rd for 2.5km. Turn right into Ardess Estate. Designer Dirt is another 300m on the left.

Open weekdays 9am to 5pm, weekends 9am to 4pm



SAT	SUN	MON	TUE	WED	THU	FRI	SAT	SUN	MON	TUE	WED	THU	FRI	SAT	SUN
21	22	23	24	25	26	27	28	29	30	1	2	3	4	5	6



BROWN & THE BEARD

Painting

Handasyde's Cafe
382 Chesterpass Rd, Albany WA 6330
0427 253 052

40



BROWN AND THE BEARD

Vicki Brown & Barry Mackie will present an oil painting exhibition (he says) / explosion (she says) in all it's gloriousness of shapes, sizes, framed, unframed, canvas, boards, leaves, any topic, no set agenda with price points for all.

Canvas, cakes n cuppas at Handasyde's Cafe, from the big roundabout travel 4.5km on Chesterpass Rd.

Open days 9am to 4pm



SAT	SUN	MON	TUE	WED	THU	FRI	SAT	SUN	MON	TUE	WED	THU	FRI	SAT	SUN
21	22	23	24	25	26	27	28	29	30	1	2	3	4	5	6



COCREATIVES

Painting, Drawing, Photography, Mixed Media

41

20 Talyuberlup Way, Lange WA 6330
0447 881 601

VANISHING POINT Humanity is privileged to inhabit a beautiful world. As nature shapes our history, we respectfully explore, celebrate and nurture this relationship.

From the big roundabout travel east on Chester Pass road, turn right onto Mercer rd, after 2.4km turn right into Talyuberlup way, then find us on your right.

Please note: this Exhibition is NOT open on Sundays.

Open days 10am to 4pm



SAT	SUN	MON	TUE	WED	THU	FRI	SAT	SUN	MON	TUE	WED	THU	FRI	SAT	SUN
21	22	23	24	25	26	27	28	29	30	1	2	3	4	5	6



LAURA NEWBURY

Printmaking, Painting

42

13 Nesbitt Rd, Spencer Park WA 6330
0421 745 042

CHAIRS AND RUG AND OTHER THINGS

Laura's happy place is the dining room table. Delightful, whimsical, hand-coloured collographs combine a spirit of hospitality, declaring her penchant for furniture and floor rugs.

From Middleton Beach Rd, turn left onto Seymour St, right onto Collingwood Rd then left onto Warden Ave. Immediately turn left on Nesbitt Rd. Venue is located halfway down.

Open days 10am to 3pm



SAT	SUN	MON	TUE	WED	THU	FRI	SAT	SUN	MON	TUE	WED	THU	FRI	SAT	SUN
21	22	23	24	25	26	27	28	29	30	1	2	3	4	5	6



KING RIVER HALL

Sculpture, Painting, Jewellery, Textiles, Ceramics, Mixed Media

43

1520 Millbrook Rd, King River WA 6330
0418 596 168

AROUND THE RIVER

Lois Drygan, Gail Gates, Helen Marshall, Sue Noakes, Talarah Petrocchi Roelofs, Hilde Ranson, Libby Sippe, Gabi Suggate, Jenny Wilson and Nadja Roelofs. Another year of creativity, come and see what we have been doing.

From the big roundabout take Chester Pass Rd - 12km to Millbrook Rd, turn left, the Hall is 200metres along on the left.

Open days 10am to 3pm



SAT	SUN	MON	TUE	WED	THU	FRI	SAT	SUN	MON	TUE	WED	THU	FRI	SAT	SUN
21	22	23	24	25	26	27	28	29	30	1	2	3	4	5	6



ABIGAIL PARKER

Painting, Jewellery, Drawing, Giclee Prints, Greeting Cards

524 Lower King Rd, Lower King WA 6330
0403 783 669

44



EVOLUTION... come explore Abigail's Open Studio, focused on conservation and local flora/fauna. Meet the artist at work. Featuring original oils, watercolours, pastels; quality photographic prints and a wide range of cards, mementos, and jewellery. Regular Open Studios throughout the year, and by appointment.

Travel 10kms east of Albany on Lower King Rd... pass Marsh Way, venue is on the right.

Open days 10am to 4pm



SAT	SUN	MON	TUE	WED	THU	FRI	SAT	SUN	MON	TUE	WED	THU	FRI	SAT	SUN
21	22	23	24	25	26	27	28	29	30	1	2	3	4	5	6



RON BAKER AND MARJAN BAKHTIARIKISH

Sculpture, Painting, Drawing

78 Elizabeth St, Lower King WA 6330
0473 386 243

45



TIMELESS TREASURES Exquisite still life, floral and portrait paintings: Rich, sumptuous, luminous oil paintings from the "Most Outstanding" venue in 2023. Award-winning Classical artists have expanded their beautiful collection this year to include local and Florence inspired landscapes.

From Albany, travel east on Lower King Rd, turn right into Elizabeth St. The venue is 800 metres on the right.

Open every day 9am to 4pm



SAT	SUN	MON	TUE	WED	THU	FRI	SAT	SUN	MON	TUE	WED	THU	FRI	SAT	SUN
21	22	23	24	25	26	27	28	29	30	1	2	3	4	5	6

Ron and Marjan Fine Art

www.timelessclassicalart.com

Arcadia Gallery & Studio

Unique and Stunning Classical Art

See venue details in the this booklet
for opening hours

0473 386 243

FB: RonandMarjan.FineArt

Insta: ron.and.marjan.fine.art



LOUISE STEWART BROWN

Painting, Drawing, Textiles, Mixed Media

46

91 Elizabeth St, Lower King WA 6330
0418 919 045

MY CREATIVE ARTWORKS are bold, colourful and inspired by our beautiful ocean, it's creatures and nature and will be on display in a beautiful garden setting.

Travelling north on Lower King Rd, turn right into Elizabeth St and my Studio is on the left, 300 metres up from the water.

Open every day 10am to 4pm



SAT	SUN	MON	TUE	WED	THU	FRI	SAT	SUN	MON	TUE	WED	THU	FRI	SAT	SUN
21	22	23	24	25	26	27	28	29	30	1	2	3	4	5	6



LOWER KALGAN ARTISTS

Painting, Drawing, Sculpture

47

Lower Kalgan Hall
516 Nanarup Rd, Kalgan WA 6330
0427 464 182

An Exhibition reflecting the diverse Art of the Kalgan.

Artists; Lee Garvey, Colin Montefiore, Ellie Cameron, Ron Goodwin, Yvonne Longville, Judy Maughan, Chris Donnell, Moya Cole Lucy Anderton will be exhibiting at the Lower Kalgan Hall.

Travel eastwards on Lower King Rd/Nanarup Rd and over the bridges. 2km further the hall is on the right just passed Gull Rock.

Open days 10am to 4pm



SAT	SUN	MON	TUE	WED	THU	FRI	SAT	SUN	MON	TUE	WED	THU	FRI	SAT	SUN
21	22	23	24	25	26	27	28	29	30	1	2	3	4	5	6



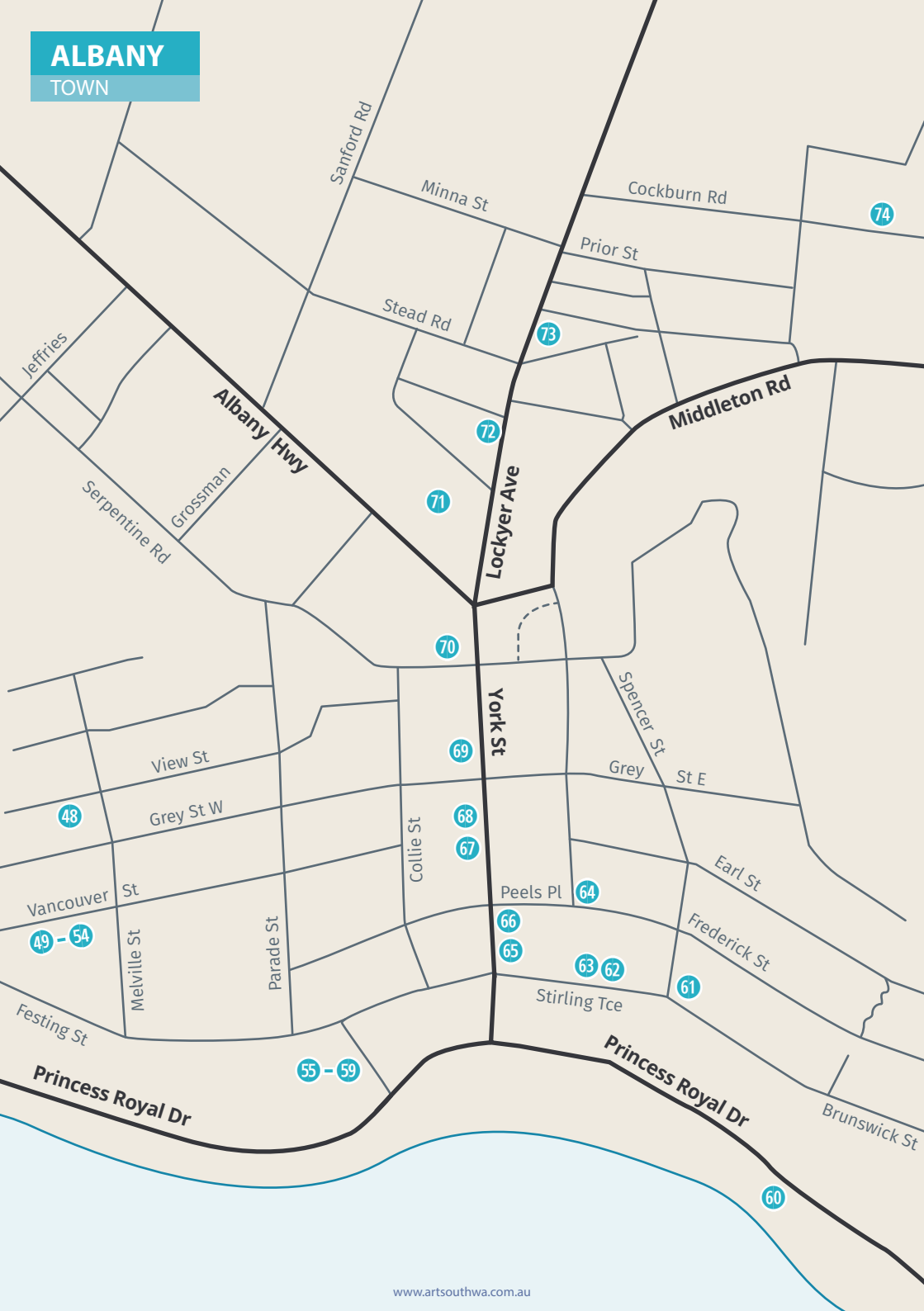
Perth to Albany and everywhere
inbetween

www.greatsoutherncouriers.com.au
info@greatsoutherncouriers.com.au
0429 446 466



ALBANY

TOWN





MCKENZIE STUDIO

Sculpture, Woodwork, Painting, Drawing

202 Grey St West, Albany WA 6330
0407 955 722

48

Located in the grounds of the historic McKenzie House, Richard explores the limits between form and function, working in recycled materials and found objects. He has previously exhibited fine furniture at Gunyulgup Galleries. Nina works in portraiture, figurative drawing and painting.

Travelling south on York St, turn right onto Grey St West, the venue is 700m along on the right.

Open days 10am to 4pm



SAT	SUN	MON	TUE	WED	THU	FRI	SAT	SUN	MON	TUE	WED	THU	FRI	SAT	SUN
21	22	23	24	25	26	27	28	29	30	1	2	3	4	5	6



ALBANY POTTERY GROUP INC.

Ceramics

Rear of Vancouver Arts Centre
85 Vancouver St, Albany WA 6330
0401 086 862

49

A popular ceramic exhibition featuring a wide variety of highly sought-after homewares & sculptural pieces created by talented local potters.

Find this exhibition at the rear of The Vancouver Arts Centre, from York St, turn into Grey St West, turn left into Melville St, turn right onto Vancouver St, the venue is on the left.

Open every day 10am to 4pm



SAT	SUN	MON	TUE	WED	THU	FRI	SAT	SUN	MON	TUE	WED	THU	FRI	SAT	SUN
21	22	23	24	25	26	27	28	29	30	1	2	3	4	5	6



FELTERS IN THE GREAT SOUTHERN

Mixed Media, Sculpture, Jewellery, Wearable art, Home Decor - all made with Felt.

Vancouver Arts Centre
85 Vancouver St, Albany WA 6330
0410 765 179

50

FELTING FANTASY'S

FIGS promise to stimulate your appreciation of the 'felted world' in 2024; be delighted in many sculptural, pictorial, wearable felted products.

From York St, turn into Grey St West, turn left into Melville St, turn right onto Vancouver St, the venue is on the left.

Open every day 10am to 4pm



SAT	SUN	MON	TUE	WED	THU	FRI	SAT	SUN	MON	TUE	WED	THU	FRI	SAT	SUN
21	22	23	24	25	26	27	28	29	30	1	2	3	4	5	6



HOMEGROWN & ALL THE REST

Photography, Painting, Silversmithing, Digital Illustration

51

Vancouver Arts Centre
85 Vancouver St, Albany WA 6330
0408 663 292

HOMEGROWN AND ALL THE REST Heather Brown, Morgan Burke, Zoë Phreo and Stones present a multimedia exhibition inspired by beauty in the natural world and the human condition. Experience individual connections to emotion, memories, beauty, and passion.

From York St, turn into Grey St West, turn left into Melville St, turn right onto Vancouver St, the venue is on the left.

Open every day 10am to 4pm



SAT	SUN	MON	TUE	WED	THU	FRI	SAT	SUN	MON	TUE	WED	THU	FRI	SAT	SUN
21	22	23	24	25	26	27	28	29	30	1	2	3	4	5	6



#WOMENWHOPRINT

Printmaking

52

Vancouver Arts Centre
85 Vancouver St, Albany WA 6330
0438 587 717

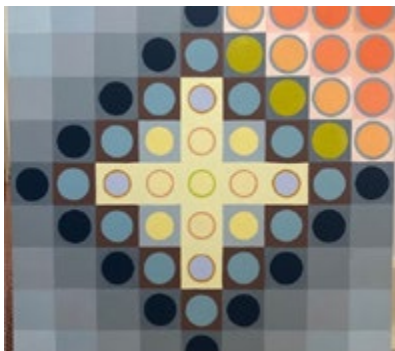
WATER Printmakers Bev Doig, Helen Fitzhardinge and Sally Marshall present you an exhibition of traditional and contemporary handprinting techniques. Inspired by our affinities and local environments, we celebrate everyday moments, play and exploration, and wider watery worlds.

From York St, turn into Grey St West, turn left into Melville St, turn right onto Vancouver St, the venue is on the left.

Open every day 10am to 4pm



SAT	SUN	MON	TUE	WED	THU	FRI	SAT	SUN	MON	TUE	WED	THU	FRI	SAT	SUN
21	22	23	24	25	26	27	28	29	30	1	2	3	4	5	6



JANE O'HALLORAN

Painting

53

Vancouver Arts Centre Albany
85 Vancouver St, Albany WA 6330

RADIO ECHO

Addressing assumptions about our changing world. Using deep space radio-echo technology, Astronomers magnify darkness between stars to illuminate the galaxies beyond. Could this seductive delusion of choice blind us to the finiteness of planet Earth?

From York St, turn into Grey St West, turn left into Melville St, turn right onto Vancouver St, the venue on the left.

Open every day 10am to 4pm



SAT	SUN	MON	TUE	WED	THU	FRI	SAT	SUN	MON	TUE	WED	THU	FRI	SAT	SUN
21	22	23	24	25	26	27	28	29	30	1	2	3	4	5	6



BUTTER FACTORY ARTISTS @VAC

Sculpture, Painting, Printmaking, Ceramics, Textiles

54



Vancouver Arts Centre
85 Vancouver St, Albany WA 6330
0410 891 136

FLOURISH: AN INTERLUDE Flourishing is an ever-evolving process, within this constant state of flux, all you can do is push the boundaries (Antonia Case). Temporarily homeless, ten Denmark Butter Factory Studios artists are exhibiting at the VAC.

From York St, turn into Grey St West, turn left into Melville St, turn right onto Vancouver St, the venue is on the left.

Open every day 10am to 4pm



SAT	SUN	MON	TUE	WED	THU	FRI	SAT	SUN	MON	TUE	WED	THU	FRI	SAT	SUN
21	22	23	24	25	26	27	28	29	30	1	2	3	4	5	6



CYNTHIA ORR

Painting

55

Museum of the Great Southern- Pop Up Galleries
Residency Rd, Albany WA 6330
0447 211 479

Cynthia is an award winning artist and creates beautiful, diverse and contemporary paintings. This will be an exciting exhibition of new artworks with something for every taste, including her popular 'White Series' designs and luscious oil paintings.

Travel south on York St, turn right at the Stirling Tce roundabout and left onto Residency Rd. The venue is on the right.

Open every day 10am to 4pm



SAT	SUN	MON	TUE	WED	THU	FRI	SAT	SUN	MON	TUE	WED	THU	FRI	SAT	SUN
21	22	23	24	25	26	27	28	29	30	1	2	3	4	5	6



ROS JENKE AND JULIE FLETCHER

Painting

56

Museum of the Great Southern- Pop Up Galleries
Residency Rd, Albany WA 6330
0427 400 443

Julie and Ros have exhibited many times successfully in Southern Art and Craft Trail with the Albany Plein Air Group and this year will exhibit jointly at the Museum of the Great Southern-Pop-Up-Galleries

Travel south on York St, turn right at the Stirling Tce roundabout and left onto Residency Rd. The venue is on the right.

Open every day 10am to 4pm



SAT	SUN	MON	TUE	WED	THU	FRI	SAT	SUN	MON	TUE	WED	THU	FRI	SAT	SUN
21	22	23	24	25	26	27	28	29	30	1	2	3	4	5	6



SUSAN MERLI

Painting, Drawing

57

Museum of the Great Southern- Pop Up Galleries
Residency Rd, Albany WA 6330
0429 627 876

AS LUCK WOULD HAVE IT A solo exhibition of abstracted drawings, paintings and prints by Susan Merli. Located the Museum of the Great Southern.

Travel south on York St, turn right at the Stirling Tce roundabout and left onto Residency Rd. The venue is on the right.

Open every day 10am to 4pm



SAT	SUN	MON	TUE	WED	THU	FRI	SAT	SUN	MON	TUE	WED	THU	FRI	SAT	SUN
21	22	23	24	25	26	27	28	29	30	1	2	3	4	5	6



KERRI BLADES VISUAL ART

Painting, Drawing, Mixed Media

58

Museum of the Great Southern- Pop up Galleries
Residency Rd, Albany WA 6330
0407 777 198

Kerri's bright, happy, colourful works are created to bring joy to the onlooker. Her paintings and mixed media works are whimsical and illustrative with a touch of the abstract.

Travel south on York St, turn right at the Stirling Tce roundabout and left onto Residency Rd. The venue is on the right.

Open every day 10am to 4pm



SAT	SUN	MON	TUE	WED	THU	FRI	SAT	SUN	MON	TUE	WED	THU	FRI	SAT	SUN
21	22	23	24	25	26	27	28	29	30	1	2	3	4	5	6



ROSE CHAPMAN-HILL

Printmaking

59

Museum of the Great Southern - Co-Op Building
Residency Rd, Albany WA 6330
0400 863 090

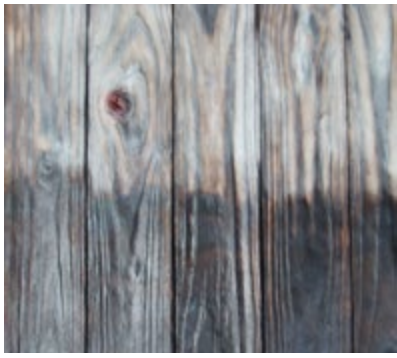
PRINTMAKING An exhibition of original, unique, prints. Rose continues her exploration with printmaking and this year along with her new lino prints, she will have some collagraph and dry point etching prints on display.

Travel south on York St, turn right at the Stirling Tce roundabout and left onto Residency Rd. The venue is on the right.

Open every day 10am to 4pm



SAT	SUN	MON	TUE	WED	THU	FRI	SAT	SUN	MON	TUE	WED	THU	FRI	SAT	SUN
21	22	23	24	25	26	27	28	29	30	1	2	3	4	5	6



ADVENTURES IN WOOD

Sculpture, Woodwork, Photography, Mixed Media, Jewellery, Metalwork

Albany Boat Shed
Princess Royal Dr, Albany WA 6330
0423 747 038

60



ADVENTURES IN WOOD is a wonderful exhibition of bush furniture, wall hangings, coffee tables, handmade knives, boxes, jewellery and a variety of other hand-crafted items made from local timbers.

Travel south down York St to the harbour. Turn left into Princess Royal Dr and continue towards the port. The venue is the third large building on the right.

Open every day 9am to 4.30pm, except Sunday 6th Oct. 9am to 2pm



SAT	SUN	MON	TUE	WED	THU	FRI	SAT	SUN	MON	TUE	WED	THU	FRI	SAT	SUN
21	22	23	24	25	26	27	28	29	30	1	2	3	4	5	6



THE ATELIER AT BEAUMARIS

Painting, Mixed Media, Other

30 Stirling Tce, Albany WA 6330
0420 907 184

61



RECOLLECTIONS

Step back in time to old world charm. Artist Tanya McBurney captures the enchantment of yesteryear with elegantly curated antiques that assemble into work whispering stories of generations gone by. Juxtaposed by contemporary painter and textile artist Kylie Porter whose stunning collection captures her love of land, country, flora and fauna.

From York St turn left into Stirling Tce.

Open days 10am to 4pm



SAT	SUN	MON	TUE	WED	THU	FRI	SAT	SUN	MON	TUE	WED	THU	FRI	SAT	SUN
21	22	23	24	25	26	27	28	29	30	1	2	3	4	5	6



Affordable, air-conditioned
2 and 3 bedroom chalets
Pet friendly



Emu Beach
CHALETs

Phone 08 9844 8889
admin@emubeachchalets.com.au
emubeachchalets.com.au



Spacious motel,
deluxe and
executive studios

EMU POINT
MOTEL & APARTMENTS

Phone 08 9844 1001
info@emupointmotel.com.au
emupointmotel.com.au



KAREN STONE / MAVERICK STONE

Painting, Mixed Media, Digital Art

Dylans on the Terrace
82-84 Stirling Tce, Albany WA 6330
0427 192 110

HELD

We are captivated by our safe places. The places that cause us to stop and catch our breath; to focus and reset. The paintings and digital artwork in this exhibition have been inspired by these moments. Presented by family members Karen & Maverick Stone.

Travel south on York St, turn left onto Stirling Tce, Venue is upstairs at Dylans on the Terrace.

Open weekdays 7am to 4pm, weekends 8am to 4pm



SAT	SUN	MON	TUE	WED	THU	FRI	SAT	SUN	MON	TUE	WED	THU	FRI	SAT	SUN
21	22	23	24	25	26	27	28	29	30	1	2	3	4	5	6

62



DOWN SOUTH ARTS AND CRAFTS COLLECTIVE INC

Sculpture, Painting, Jewellery, Drawing, Metalwork, Textiles, Ceramics, Woodwork, Photography

86 Stirling Tce, Albany WA 6330
0412 784 579

THE ART OF ALBANY

Explore this unique gallery, showcasing 12 independent local artists in WA's oldest bank building. This one-of-a-kind gallery showcases a wide variety of artwork to find the perfect gift for someone special. Join us for an inspiring and engaging experience.

Travel south on York St, turn left onto Stirling Tce. The Venue is next to Dylans Cafe.

Open weekdays 10am to 4pm, weekends 9am to 4pm



SAT	SUN	MON	TUE	WED	THU	FRI	SAT	SUN	MON	TUE	WED	THU	FRI	SAT	SUN
21	22	23	24	25	26	27	28	29	30	1	2	3	4	5	6

63



BURRATA WOOD FIRE CAFE

Painting

90 Frederick Street, Albany WA 6330
6830 1907

Inspired by the atmospheric mood, light and texture of Albany's raw environment, professional award winning Australian artist Serena McLauchlan presents new expressive oil paintings at Burrata.

Travel south on York St, turn left onto Frederick St, the venue is on the corner of Frederick St and Aberdeen St.

Open weekdays 7:30am to 3pm, Saturday 8am to 3pm, Friday & Saturday evenings 5pm to 8pm



SAT	SUN	MON	TUE	WED	THU	FRI	SAT	SUN	MON	TUE	WED	THU	FRI	SAT	SUN
21	22	23	24	25	26	27	28	29	30	1	2	3	4	5	6

64



NICCI DANIELE ART STUDIO

Sculpture, Painting, Ceramics

120 York St, Albany WA 6330
0427 802 277

65



Nicci Daniele is a passionate creator of sculptural ceramic pieces, each one a unique and one-off creation. Her artistic repertoire also includes paintings, with both styles sharing a mythological theme centered around animals and humans. Her work reflects her deep connection with the natural world.

120 York Street, located next to Clarks Newsagency on York Street.

Open weekdays and Saturdays 10am to 5pm, Sundays 11am to 2pm



SAT	SUN	MON	TUE	WED	THU	FRI	SAT	SUN	MON	TUE	WED	THU	FRI	SAT	SUN
21	22	23	24	25	26	27	28	29	30	1	2	3	4	5	6



FLOURISH ECLECTIC

Jewellery, Painting, Printmaking, Textiles, Fibres

138 York St, Albany WA 6330
0434 557 149

66



Eloise Wallefeld, Jennifer Dul and Kids Art Series. Decorative and functional natural fibre woven items. Look for wall art with botanical and landscape themes in our shop front window. Our Kids Art series exhibit will be held in our downstairs Inspire studio.

Travel south down York St, navigate straight passed three roundabouts. Venue is on the left with brick arches.

Open weekdays 9am to 5pm, Saturdays 9am to 3pm,
Sundays 10am to 2pm



SAT	SUN	MON	TUE	WED	THU	FRI	SAT	SUN	MON	TUE	WED	THU	FRI	SAT	SUN
21	22	23	24	25	26	27	28	29	30	1	2	3	4	5	6



PENNY BAKER

Painting, Mixed Media

Butterscotch
173 York St, Albany WA 6330
0410 411 291

67

PETIT FOURS

A delectable little exhibition of some bite sized paintings by Artist Penny Baker, capturing the small delights found in her joyfully delicious garden.

Travel south down York St, the exhibition will be featured in the shop Butterscotch, located on the right past the Town Hall.

Open weekdays 9am to 5pm, Saturdays 9am to 4pm



SAT	SUN	MON	TUE	WED	THU	FRI	SAT	SUN	MON	TUE	WED	THU	FRI	SAT	SUN
21	22	23	24	25	26	27	28	29	30	1	2	3	4	5	6



BUTTERSCOTCH

Painting

68

Butterscotch
173 York St, Albany WA 6330
08 9844 4685

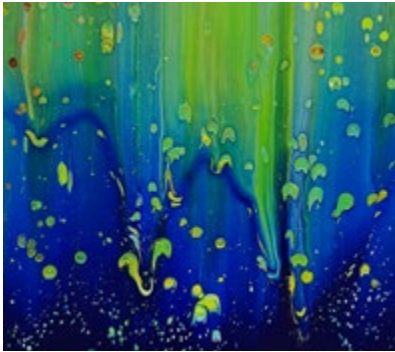
FLEUR features local artist Penny Baker who lives and works near the beautiful Kalgan River. A contemporary watercolour artist and avid gardener, Penny delights in every aspect of the botanical world and her still life paintings reflect this joy.

Travelling down York St, Butterscotch on the right between Grey St and Peels Place.

Open weekdays 9am to 5pm, Saturdays 9am to 4pm



SAT	SUN	MON	TUE	WED	THU	FRI	SAT	SUN	MON	TUE	WED	THU	FRI	SAT	SUN
21	22	23	24	25	26	27	28	29	30	1	2	3	4	5	6



ALBANY ART GROUP INC.

Painting, Sculpture, Encaustic, Printmaking, Drawing, Mixed Media, Ceramics

69

Albany Town Hall
217 York St, Albany WA 6330
0473 386 243

BRUSH AND BEYOND Now 62 years old, Albany Art Group is presenting a diverse and colourful exhibition of over 35 artists at the premium CBD location, Albany Town Hall- Upstairs Auditorium! Amazing art at affordable prices, Artist Demos, Raffles to win, People's Choice and much more!

Travel down York St. The Town Hall is on the right, by the Visitor Centre.

Open weekdays 10am to 5pm, Sundays 11am to 2pm



SAT	SUN	MON	TUE	WED	THU	FRI	SAT	SUN	MON	TUE	WED	THU	FRI	SAT	SUN
21	22	23	24	25	26	27	28	29	30	1	2	3	4	5	6

Albany Art Group

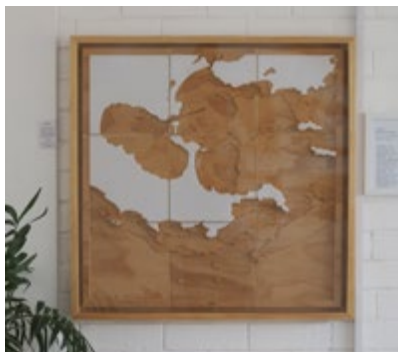
don't miss our latest fabulous exhibitions
at the Albany Town Hall

Art Trail - Venue 69

62nd Summer ex - 28 Dec thru 26 Jan'25

web: www.albanyartgroup.weebly.com

email: albanyartgroup@yahoo.com FB: [albanyartgroup](https://www.facebook.com/albanyartgroup)



SCOUT SEAS

Woodwork, 3D Nautical Charts/ Bathymetric Maps

84a Serpentine Rd, Albany WA 6330
0431 663 152

70



SCOUT SEAS STUDIO MAPS reveal the contours of the sub-sea floor to connect us back to our special place. These pieces give a new perspective to the places we all swim, surf, dive, fish, explore & remember.

Traveling north on York St, turn left at Serpentine Rd roundabout. Venue is on the right next to Southcoast Diving Supplies.

Open weekdays 10am to 4pm, weekends 9am to 3pm



SAT	SUN	MON	TUE	WED	THU	FRI	SAT	SUN	MON	TUE	WED	THU	FRI	SAT	SUN
21	22	23	24	25	26	27	28	29	30	1	2	3	4	5	6



DEO GLORIA ART GROUP

Painting, Jewellery, Furniture, Photography, Mixed Media

Albany Plaza
38 Albany Hwy, Albany WA 6330
0400 751 442 / 0428 782 836

71



A TALE OF 2 COUNTRIES Christine de Klerk, Ronel Shephard and Blake Hicks. Stories of immigrants, loss, longing and struggling to fit in. Missing family, language, customs, people and animals from your birth country. Discovering new places, kindness, the gratefulness of living in safety with opportunities.

Look for our pop-up gallery next to Aldi in the Albany Plaza, Albany CBD.

Open weekdays 9am to 4pm, Saturdays 10am to 3pm



SAT	SUN	MON	TUE	WED	THU	FRI	SAT	SUN	MON	TUE	WED	THU	FRI	SAT	SUN
21	22	23	24	25	26	27	28	29	30	1	2	3	4	5	6



COASTAL CREATIONS & CO

Painting, Jewellery, Drawing, Textiles, Woodwork, Photography, Mixed Media, Glasswork, Sewing

Shop 6, 69-75 Lockyer Ave, Albany WA 6330
08 9841 2273

72

Coastal Creations and Co is a retail outlet that showcases over 50 local and regional WA Artisans and Creatives.

We are located on Lockyer Ave, opposite Dog Rock Woolworths. Parking available at front and rear of shop (via Alexander St) and also in the carpark across the road. Looking forward to seeing you.

Open every day 10am to 4pm



SAT	SUN	MON	TUE	WED	THU	FRI	SAT	SUN	MON	TUE	WED	THU	FRI	SAT	SUN
21	22	23	24	25	26	27	28	29	30	1	2	3	4	5	6



ECLIPSE CREATIVE COLLECTIVE

Jewellery, Mosaic, Textiles, Mixed Media, Drawing, Woodwork, Wearable Art, Other

96 Lockyer Ave, Albany WA 6330
0498 194 222

73

Pop Up Gallery inspired by colour, fibres, and scents of creativity. Immerse yourself in a kaleidoscope of mesmerising mosaics, innovative resin, unique clothing, jewellery, enchanting Gnomes & Bears, laser-cut woodwork, tantalising soaps and more. All locally hand crafted. Christmas shopping starts here. A sensory feast awaits!

Look for the banners, teardrop sculpture and the sheep at 96 Lockyer Ave.

Open every day 10am to 4pm



SAT	SUN	MON	TUE	WED	THU	FRI	SAT	SUN	MON	TUE	WED	THU	FRI	SAT	SUN
21	22	23	24	25	26	27	28	29	30	1	2	3	4	5	6



COMMUNITY LIVING ASSOCIATION

Mixed Media

Community Living Association
56 Cockburn Rd, Mira Mar WA 6330
08 9842 3855

74

LIFE AND LIGHT is an exhibition solely by artists with disability. Light is essential to our health and wellbeing, it can impact our mood and energy. Our artists have produced engaging works that follow life and light as seen from their perspective.

Travel north along Lockyer Ave, turn right onto Cockburn Rd, the venue is 500m along on the left.

Open weekdays 9am to 5pm, Saturday 11am to 2pm



SAT	SUN	MON	TUE	WED	THU	FRI	SAT	SUN	MON	TUE	WED	THU	FRI	SAT	SUN
21	22	23	24	25	26	27	28	29	30	1	2	3	4	5	6

To sell what you love,
talk to someone who loves where you live.

Servicing the Great Southern region from Albany, Denmark, Kojoonup & Hopetoun.

Great Southern 9842 9550
96 Lockyer Avenue, Albany
rh.com.au/greatsouthern

Raine & Horne. CELEBRATING 140 YRS 1883-2023

DISCOVER UNIQUE ART



Let someone else do the driving and enjoy the region's food and wine along the way!

Art Trail Tours 2024

9:00am to 4:45pm

Albany Visitor Centre

\$199 per person

Lunch included

Inquiries
0418 414 425

Denmark/Walpole: 28 September
Mt Barker/Kojonup: 5 October

Tour details & bookings
busybluebus.com.au/tours

Supported by



SAVE THE DATES

Southern Art + Craft Trail

**Saturday 27th September - Sunday
12th October, 2025**

Don't miss out on being part of the Southern Art and Craft Trail Event. We invite you to exhibit with us again, or for the first time, next year.

The Art Trail is an initiative of ArtSouthWA, an organisation formed to promote and market the visual arts and crafts of artists living and working in the greater southern region of Western Australia.

How can you help?

We are a small community group with big aspirations, but we need your help. Do you love getting involved and working as part of a team? If you can spare time to assist with marketing, organising and distribution, we would love to hear from you. *See contact details below.*

Easter Arts Festival

**Saturday 12th April - Sunday
20th April 2025**

Open Studios | Galleries | Wineries |
Workshops | Markets

This new initiative will provide increased opportunities for artists and visitors to engage in creativity and the arts over the Easter and school holiday period.

Artwork: Katie Rowe - "Grotto"

MEMBERSHIP

ArtSouthWA membership is open to all visual artists and craftspeople located in the southern region of Western Australia. This includes galleries, art organisations and related businesses. You will be promoted for a full 12 months and have access to numerous member benefits. Contact us for more details.

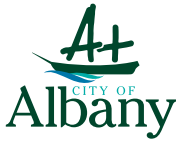


admin@artsouthwa.com.au
www.artsouthwa.com.au

ACKNOWLEDGEMENTS



DIAMOND



Grants and Sponsorship

We thank the wonderful sponsors and contributors that supported us in 2024. Without their generosity and support, the Southern Art and Craft Trail would not be as widespread and engaging. We encourage all our followers to connect with, or become customers of all our generous supporters.

PLATINUM



WESTERN AUSTRALIA

GOLD



SILVER



BRONZE



DONORS

- Busy Blue Bus, Albany
- West Cape Howe Wines, Mount Barker
- Albany's Historic Whaling Station, Albany
- Hilton Garden Inn Albany
- Forest Hill Wines, Denmark

SUPPORTERS

- Strike Point Graphic Design and Printing
- Adrenaline Design & Marketing, Perth

THANK YOU

REGIONAL ARTS WA



30 YEARS

of Art, Creativity, and Community

www.regionalartswa.org.au

Image: Dalisa Pigram, Broome. Photo by Martine Perret



In 1914, more than 41,000 Australians and New Zealanders left Albany, bound for the First World War.

This is their story.

The **National Anzac Centre** is Australia's foremost museum dedicated to honouring the Anzacs of the First World War.

Follow the real life experience of one of 32 Anzac characters using interactive multimedia, unique artefacts, rare images and film, and audio commentary.

67 Forts Road, Albany, Western Australia | www.nationalanzaccentre.com.au

