

2026 EASTER ARTS FESTIVAL



3 APRIL - 19 APRIL



ArtSouthWA

FREE ARTS EVENT

Open Studios • Exhibitions  
Markets • Music • More



[www.artsouthwa.com.au](http://www.artsouthwa.com.au)



# EASTER ARTS FESTIVAL INFORMATION

## ArtSouthWA annual activities include:

- Presentation of the Easter Arts Festival.
- Presentation of the annual Southern Art and Craft Trail Event, including workshops.
- New for 2026 is the Festival of Halls as part of the Albany Bicentenary
- An annual program of art education workshops for its members and other interested members of the public.
- Promotion of members for 12 months of the year through various social media platforms.
- An online member directory at [www.artsouthwa.com.au](http://www.artsouthwa.com.au)
- Regular posts of opportunities and arts news on our Instagram and Facebook pages 'ArtSouthWA and the Southern Art & Craft Trail'.

## How to Find the Artists

To discover live maps to venues and access all artist details including their own websites, please go to [www.artsouthwa.com.au](http://www.artsouthwa.com.au). Drop down the Members menu and click on Members Directory.

## How to Find Events – Event locations

You can find activities, workshops and events to attend on the "What's On" page 4.

Each venue listing outlines the most direct route to the venue. They are geographically listed and then in alphabetical order. We recommend you use comprehensive local or online maps to assist you to find venues. All Exhibitions have a Google Maps locator on [www.artsouthwa.com.au](http://www.artsouthwa.com.au). See the 'Easter Arts Festival Directory' and click on 'Get Directions'.

## Opening Times

Opening times of all artist venues are indicated in the booklet according to information provided at time of going to print. ArtSouthWA is not responsible for any venue not being open when indicated in the booklet. If in doubt, please contact the artist or venue first. Exhibitors prefer that you only visit during the stated opening times.

## Plan Your Route

Artist's exhibitions have varying opening times so check the dates and times when planning your route.

## Travel Safely

Travel at a safe speed – adapt your speed for the weather, light, traffic and road conditions. Be aware of wildlife, livestock, road trains and machinery on country roads.

Be aware that you are responsible for your own safety and personal belongings. ArtSouthWA is not responsible for any loss or damage or injury, however caused, to the property or person of any visitor to studios, or other premises listed in this booklet.

## Photography

Photos used throughout this booklet have been provided by artists and other credited sources. No photos can be reproduced without the express permission of the copyright owners. We encourage you to take photos of artists, venues, events and activities (with their consent) and post to Social Media. On Facebook include the tag @ ArtSouthWA. On Instagram include the hashtag #ArtSouthWA. Sharing and tagging our event will help our artists.

### Administration Officer

Anne Sparrow  
P.O. Box 6009, Albany WA 6332  
[admin@artsouthwa.com.au](mailto:admin@artsouthwa.com.au)

[www.artsouthwa.com.au](http://www.artsouthwa.com.au)



**LOOK FOR THIS SIGN  
AT ALL ART VENUES**

# WELCOME TO COUNTRY



Lester Coyne

On behalf of the Custodians of Menang Boodja, I respectfully acknowledge the Bibbulman People to the west, Goreng People to the north and Wirlomin People to the east, extending the hand of friendship, reconciliation and a warm all-embracing Welcome to Country to all visitors to Menang Boodja.

I acknowledge Elders past and present and welcome emerging young leaders expected to take up cultural leadership roles as some of our Elders assume support roles. Menang Boodja is in urgent need of a 'soft, respectful touch', our flora, fauna, hopes and aspirations appear dim as demand exceeds lands ability to provide cultural, maternal care. As First Nations People, we are culturally obligated to ensure our Boodja remains healthy.

# CHAIRPERSON'S WELCOME

## Welcome to the 2nd Easter Arts Festival 2026

On behalf of the ArtSouthWA Board, it is my absolute pleasure to welcome you to our 2nd Easter Arts Festival.

This festival is truly a celebration of the heart and soul of our community — a coming together of creativity, imagination, and shared experiences. What makes this event so special is not just the art on the walls or the



performances on the stage, but the people behind them — our local artists, musicians, performers, makers, volunteers, and supporters who bring this festival to life.

As you wander through the exhibitions, pause to take in a performance, join a workshop, or explore our markets and venues, I encourage you to slow down and really experience the creativity around you. Start conversations. Discover something new. Reconnect with familiar faces. Enjoy the wonderful flavours from our cafés, markets, and wineries. Most of all, allow yourself to be inspired.

This festival exists because of the dedication and generosity of so many — our members, artists, performers, venues, sponsors, community partners, and of course, you, our visitors. Your enthusiasm and support are what make this creative journey possible.

Thank you for being part of the Easter Arts Festival. We are so proud to share it with you, and we look forward to growing this beautiful celebration together for many years to come.

Enjoy every moment, have fun, and I hope to see you again next year.

# ARTIST & VENUE INDEX

VENUE	ARTIST
1	Majestic Merino
2	Porongurup Studio
3	Art Chatter Gallery
4	Lavender Bee
5	Mitchell House Arts Centre
6	Youngs Siding Community Association
7	King River Hall
8	Cynthia Orr
9	Brown and the Beards
10	Albany Art Group
11	Abigail's Ecoart: Studio/Gallery
12	Louise Stewart Brown Creative Artworks
13	Jo Wassell

VENUE	ARTIST
14	Paula Morrison - Blue Waters Studio
15	Carol Hope
16	City of Albany
17	Shady Booze Hounds
18	Lee Garvey
19	Phoenix Fine Arts
20	Heather Brown
21	Annie Johnson
22	Sue Noakes
23	Helen Parry
24	Terri Pikora
25	Anne Sparrow, Diana Henderson , Jasmine Peart

# SAVE THE DATE 2027



**2027 will be the third year of the ArtSouthWA Easter Arts Festival in the Great Southern. This multi arts event will run from during April in 2027.**

It's a 17-day celebration of creativity meeting community for art, music, food and wine lovers. It will include open home studios, outdoor markets, wineries, cosy cafes, pop-up activations, hands-on workshops and performances.

Easter and the school holidays are a fantastic time for visitors and locals to connect with local artists and get hands on in arts-based activities.



For more information contact: [admin@artsouthwa.com.au](mailto:admin@artsouthwa.com.au)

[www.artsouthwa.com.au](http://www.artsouthwa.com.au)

[southernartcrafttrail](https://www.facebook.com/southernartcrafttrail)

# LEGEND

<b>W</b> Winery	<b>R</b> Restaurant / Cafe	Venue Closed	Wheelchair Access	Restroom Facilities	Refreshments Available
<b>G</b> Gallery	<b>H</b> Home Display	Venue Open	Off Road Parking	Credit Card Facilities	

## VENUE OPENING EVENTS

### Albany Historic Whaling Station

Thursday 2nd April 4pm - 5.30pm  
Albany Historic Whaling Station Exhibition Opening  
81 Whaling Station Rd, Torndirrup

### Cynthia Orr

Wednesday 1st April 5pm - 7pm  
Cynthia Orr Exhibition Opening  
Millbrook House 1596 Millbrook Road King River  
For more details contact Cynthia 0447 211 479

### Shady Booze Hounds

Friday 4pm - 6pm  
Short and Shady Exhibition Opening  
122 Hare St, Albany

### Mitchell House Arts Centre

Friday 3 April - Afternoon Tea - 2pm  
Celebrating History Exhibition Opening  
42 Albany Hwy, Mount Barker

### Phoenix Fine Arts

Saturday 4th April - Morning Tea - 10.30am  
Phoenix Fine Arts Exhibition Opening  
CWA Hall, 94 Serpentine Road, Albany

## DEMONSTRATIONS

### 3 Art Chatter Gallery

4 Langton Road, Mt Barker  
*An artist will be painting on site each day the exhibition is open.*

### 4 Lavender Bee

2/26 Langton road Mount Barker  
Tuesday 7th April 10am - 11am  
*Needle felting in action.*

### 9 Brown and the Beard

Handasyde's Cafe 382 Chester Pass Road, Albany  
*An artist will be painting every day of the exhibition and be very happy to chat about what they are doing with you.*

### 10 Albany Art Group

Lower Kalgan Hall  
Saturday 4th April 11am  
*Ron Goodwin demonstrating Portraiture in oils.*  
Monday 6th April 11am  
*Colin Montifiore Beach Scene in Oils.*  
Tuesday 7th April 11am  
*Suzanne DeLandgrafft demonstrating Figures in Landscape in pastel.*

### 12 Louise Stewart Brown - Creative Artworks

91 Elizabeth Street, Lower King  
*Demonstrating art throughout the day.*

### 18 Lee Garvey

85 Vancouver St, Albany  
Wednesday 15th April 10am to 12 noon  
*Demonstration of portrait painting.*

### 19 Phoenix Fine Arts

CWA Hall, 94 Serpentine Road, Albany  
Saturday 4th April, from 1.30pm  
*John Coen - Mixed media stop frame.*  
Sunday 6th April, from 10.30am  
*John Coen - Portraits in charcoal.*  
Friday 17th April, from 1.30pm  
*Kate Myers - Watercolour painting demo.*

### 21 Annie Johnson

Museum of the Great Southern, Pop Up Gallery,  
Residency Road, Albany  
*Every day, Either stitching or painting.*

### 22 Sue Noakes

Museum of the Great Southern, Pop Up Gallery,  
Residency Road, Albany  
*Every day, Either stitching or painting.*

### 24 Terri Pikora

Museum of the Great Southern, Pop Up Gallery,  
Residency Road, Albany  
*Hand stitching on paper daily.*



# WHAT'S ON

## ART IN THE PORONGURUP

### Art in the Porongurup 2026

Hosted in and around the Porongurup Hall

Friday 3 April to Saturday 11 April  
9am to 4.30pm daily  
(except on the 11th, closes at 1pm).

Free community event showcases sculptures by emerging and established artists in the natural bushland alongside an art and craft bazaar inside.

## ECLIPSE EVENTS

### Albany Easter Markets

Saturday 4th April

9am - 2pm

on the Albany Town Square

5 local bands, arts and crafts, food, kids activities, easter bunny and more

## ANNIE JOHNSON

### Museum of the Great Southern - Albany Encaustic Wax workshop

Thursday 9 April and Friday 17 April  
10am-4pm.

Join me for an immersive experience of painting with beeswax and damar resin to produce 2D textural paintings. No experience required.

Contact: [anne2112@westnet.com.au](mailto:anne2112@westnet.com.au) for further information

## ALBANY ART CAFÉ

### Albany Art Café

#### Kid's Craft Mornings-

Fridays 10th and 17th  
9:30am to 11:30am

Multiple activity stations set up for children aged 4-12 to participate.

Bookings essential via [www.albanyartworkshops.com.au](http://www.albanyartworkshops.com.au)

## YOUNGS SIDING COMMUNITY ASSOC

### Youngs Siding Community Association Youngs at Heart Exhibition opening, Poetry & Storytelling

Saturday 11 April  
5pm til late

Youngs Siding Hall, 29 Station St,  
Youngs Siding

## MUSEUM OF THE GREAT SOUTHERN

### Museum of the Great Southern - Albany Discovery Centre – Albany Then and Now

10am - 2pm

Saturday 4 to Sunday 19 April

No bookings required

Step into the past... then leap into the future!

Information and book. <http://museum.wa.gov.au/museums/museum-of-the-great-southern#whatson>

## MUSEUM OF THE GREAT SOUTHERN

### Museum of the Great Southern - Albany

#### Escape Room - Time Travel Activated!

Tue 7th, Wed 8th, Thur 9th, Fri 10th  
April 2026 10am, 11am, 1pm, 2pm

\$15 per family (3-6 players)

Bookings essential

Nothing is as it seems...

Information and book. <http://museum.wa.gov.au/museums/museum-of-the-great-southern#whatson>

## MUSEUM OF THE GREAT SOUTHERN

### Museum of the Great Southern - Albany. Sunlight Stories: Cyanotype Photography

Mon 13th & Fri 17th April 2026  
10:30am

Cost: \$8 Bookings required

Join us for a bright and creative cyanotype workshop where kids use leaves, flowers, and fun everyday objects to make amazing blue-and-white artworks.

Information and book. <http://museum.wa.gov.au/museums/museum-of-the-great-southern#whatson>

## LAVENDER BEE

### Lavender Bee

Textured painting and Mixed media Workshop

Tuesday 14 April 10am - 11:30am

Create your own fun artwork incorporating modelling paste, sand, string and more with acrylic paint.

All ages welcome.

\$50.00p.p. include a stretched canvas and all material to complete this project.

## MUSEUM OF THE GREAT SOUTHERN

### Museum of the Great Southern - Albany - Photography Workshop & Photo walk

Wed 15th April 2026  
10:30am – 12pm

Free but Bookings essential

Information and book. <http://museum.wa.gov.au/museums/museum-of-the-great-southern#whatson>



## WHAT'S ON

### MUSEUM OF THE GREAT SOUTHERN

Museum of the Great Southern - Albany

Flat lay Studio: History from Above

Thurs 16th April 2026. 10:30am

Cost: \$8

Kids can design beautiful "Pinterest style" flat lays using special objects from the Museum plus their own treasures from home.

Information and book. <http://museum.wa.gov.au/museums/museum-of-the-great-southern#whatson>

### ALBANY BOATSHED MARKETS

Albany Boatshed Markets

Sundays 9am - 1pm

Extravaganza Market on Easter

Sunday 5th April

Its all local - Music, Produce, Food, Arts, Crafts

256 Princess Royal Dr,  
Albany WA

### DENMARK MARKETS

Denmark Markets

Saturdays 9am - 1pm

Local Produce, Arts & Crafts,  
Food & Coffee, Music

High School,  
956 South Coast Hwy,  
Denmark WA 6333

### PLANTAGENET WINES CELLAR DOOR MOUNT BARKER

Plantagenet Wines  
Cellar Door & Cafe

45 Albany Hwy,  
Mount Barker WA

Open daily 10am - 4pm

Cafe open daily 11am - 3pm

Premium Wines, Local Gourmet  
Produce, Playground

Experience Great Southern Wine  
History in the heart of Mount Barker.

# ArtSouthWA

## HOW CAN YOU HELP?

We are a small regional community group with big aspirations, but we need your help. Do you love getting involved and working as part of a team? If you can spare time to assist with marketing, organising and distribution, we would love to hear from you. See contact details below.

Administration Officer

Anne Sparrow

P.O. Box 6009, Albany WA 6332

[admin@artsouthwa.com.au](mailto:admin@artsouthwa.com.au)

[www.artsouthwa.com.au](http://www.artsouthwa.com.au)



## MEMBERSHIP

ArtSouthWA membership is open to all visual artists and craftspeople located in the greater southern region of Western Australia. This includes galleries, art groups and related businesses. You will be promoted for a full 12 months and have access to member benefits. Contact [admin@artsouthwa.com.au](mailto:admin@artsouthwa.com.au) for more details or head to our website [artsouthwa.com.au](http://artsouthwa.com.au)

# EASTER ARTS SURVEY

Welcome to the second Easter Arts Festival! Our members have worked hard to bring together a fantastic collection of arts events and activities that showcase the creative spirit of our region over the Easter and school holiday period.

As you explore the various locations featured in this booklet, we'd love for you to take a moment to share your thoughts by completing a short survey. Your feedback means the world to us! We'll ask you about your experience, the quality of the work, the atmosphere of the exhibition, and your personal interactions with the artists or event organisers.

We're excited to see this event grow bigger and better in the future, and we can't wait to hear your ideas! If you're interested in being part of next year's festival, let us know – we'd love to include you!

Thank you for being a part of the inaugural Easter Arts Festival.

Enjoy the creativity and inspiration around you!



<https://www.surveymonkey.com/r/2026EAFV>

**NARRIKUP  
TOWN HALL  
NARRIKUP**

THE ART OF  
**BOOKS**

**SATURDAY  
11 APRIL 2026  
9AM - 3PM**

**PEN & WASH WORKSHOP**  
with Andy Dolphin

Learn to simplify a scene in pencil & pen, finished with watercolour wash. Beginners welcome. Bookings essential. Light lunch included.

**JUNK JOURNALING WORKSHOP**

Create personalised pages using found & recycled materials. Capture memories, ideas & inspiration your way. Bookings essential. Light breakfast included.

**BOOK FOLDING DEMONSTRATION**

Discover the creative world of book folding. Choose a book from the MEGA BOOK SALE and join this relaxed, all-skills demo. No bookings required.

**PAINT A PEBBLE**

Unleash your creativity in a Pebble Painting session – perfect for all ages and skill levels! No bookings required – just drop in!

**NARRIKUP CAFÉ  
+ MEGA BOOK SALE**

**9.00 am – 3.00 pm**  
Toasted sandwiches, fresh salads and home-baked treats. GF & vegetarian options available. Come for the food, stay for the community vibe!

Proudly brought to you



**Lavender Bee** **NARRIKUP**  
ARTS - CRAFTS - HOBBIES SPORTS & COMMUNITY GROUP INC

Proudly supported by



**FOR BOOKINGS AND  
FURTHER INFORMATION**

Visit: [lavenderbee.com.au](http://lavenderbee.com.au)  
Email: [create@lavenderbee.com.au](mailto:create@lavenderbee.com.au)

**MEET THE MAKER  
EXHIBITION + MARKET**

Visit our vibrant marquee full of colour, creativity and innovation from artists across our region. Browse a beautiful showcase of handcrafted works with unique pieces. Meet the makers, hear their stories and support talented local artists and craftspeople.

2  
0  
2  
6



The Festival of Halls is an Albany Bicentennial project that aims to bring communities and visitors together in a celebration of Arts in Heritage Halls. From the 3rd April to the 7th June, Seven Heritage Halls from across the Albany region will come to life with Visual Arts, Music, Workshops and Indigenous Culture.

**BORNHOLM | ELLEKER | LOWER KING | LOWER KALGAN  
YOUNGS SIDING | TORBAY | ALBANY**

Historically, these halls were community hubs of activity. Anything from dances, sports, birthdays, wedding, Christmas gatherings and a huge array of other activities would always centre around these hubs. Today, many halls are less used than others but they still fill a vital role in regional communities. Most Halls have a booking system where you can hire them for your own events or celebrations. Here are just some of the activities that will be taking place.

Bornholm Hall will be hosting a Dinner Dance on Saturday 28th March. \$35 pp. Contact Julie on 0408 989 858 to book your tickets. Felters of the Great Southern Open Day on Sunday 17th May.

Youngs Siding Hall is over 100 years old. It will come alive to Storytelling and Poetry on Saturday 11th April before the local artists immerse themselves in a week-long art exhibition celebrating wholly local talent.

King River Hall is the most frequently used hall of the region. It is over 125 years old. Every week this hall pulses with arts and community activities. As part of the festival, the Hall is host to a three-day Hands on Pastel Exhibition from the 4th to 6th April. From the 16th May to 22nd May there will be an Art Bazaar by local artists.



The Lower Kalgan Hall is one of Albany's bigger Halls and is hosting the Albany Arts Groups "Art from the Edge" exhibition from Friday 3rd April to Sunday 12th April. The 9th May will celebrate local music with bands. To finish off the festival, there will be a 2 day celebration of our Indigenous Cultural heritage partnering with Albany Senior High School and other community members.

The Festival will finish with a local bands celebration at the Albany Town Hall on Saturday 6th June.



Keep up to date at our website [artsouthwa.com.au](http://artsouthwa.com.au) and follow us on Facebook and Instagram.   



## SAVE THE DATE

### ALBANY BICENTENARY FESTIVAL OF HALLS - FRIDAY 3 APRIL - 7 JUNE 2026

This multi arts event will run from Friday 3rd April to Sunday 7th June.

Inspired by the successful Festival of Small Halls, this event brings together the best in visual arts, performing arts, and cultural heritage, showcasing them in the historic and modern community halls that are the heartbeat of our region.

These autumn and winter warmer events are designed to share the stories, traditions, and artistic expressions that have shaped these communities.

**THE BICENTENARY FESTIVAL OF HERITAGE HALLS IS A CULTURAL TOUR THAT CELEBRATES THE RICH ARTS, HERITAGE, AND CULTURAL TRADITIONS OF THE GREAT SOUTHERN.**

This multi arts event will run from Friday 3rd April to Sunday 7th June.

Inspired by the successful Festival of Small Halls, this event brings together the best in visual arts, performing arts, and cultural heritage, showcasing them in the historic and modern community halls that are the heartbeat of our region.

These autumn and winter warmer events are designed to share the stories, traditions, and artistic expressions that have shaped these communities.



For more information contact: [admin@artsouthwa.com.au](mailto:admin@artsouthwa.com.au)



[www.artsouthwa.com.au](http://www.artsouthwa.com.au)



[southernartcrafttrail](https://www.facebook.com/southernartcrafttrail)

### SOUTHERN ART + CRAFT TRAIL - SAT 26TH SEPTEMBER - SUN 11TH OCTOBER 2026

Don't miss out on being part of the Southern Art + Craft Trail event. We invite you to exhibit with us again, or for the first time this year.

The Art Trail is an initiative of ArtSouthWA, an organisation formed to promote and market the visual arts and crafts of artists living and working in the greater southern region.

**Southern Art + Craft Trail 2026**

*60+ Exhibitions & Open Studios*

**SATURDAY 26<sup>TH</sup> SEPTEMBER TO SUNDAY 11<sup>TH</sup> OCTOBER 2026**

**Western Australia's premier art trail event is back for its 23rd year.**

The 2026 Southern Art + Craft Trail will run from Saturday 26th September to Sunday 11th October. ArtSouthWA is presenting 60+ venues featuring the work of over 500 artists ready to inspire, engage and spark your creativity across 46,000 hectares.

One of the longest running art trails in Australia, the event never disappoints.

Presented by

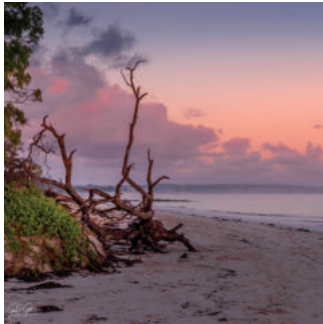
16 days to discover the artistic talent of the Southern Region!

For more information contact: [trail@artsouthwa.com.au](mailto:trail@artsouthwa.com.au)

Follow us on FB and Instagram and at our website

[southernartcrafttrail](https://www.facebook.com/southernartcrafttrail)

[www.artsouthwa.com.au](http://www.artsouthwa.com.au)



## GAIL GUTHRIE MAJESTIC MERINO 1

106 Riverside Dr, Nornalup

Photography, Textiles

Open everyday: 10am - 4pm.

0427 689 028

MAJESTIC MERINO - Textiles of felted embroidery and fabric manipulation with the threads and fabrics to support these. Kits and finished items. Knitting wools. Photography of local and New Zealand landscapes.

1 km from South Coast Hwy on Riverside Dr, Nornalup. Follow the Studio Open signs.



FRI	SAT	SUN	MON	TUE	WED	THU	FRI	SAT	SUN	MON	TUE	WED	THU	FRI	SAT	SUN
03	04	05	06	07	08	09	10	11	12	13	14	15	16	17	18	19



## PORONGURUP SHOP 2

1972 Porongurup Rd, Porongurup

Mixed Media, Painting, Drawing

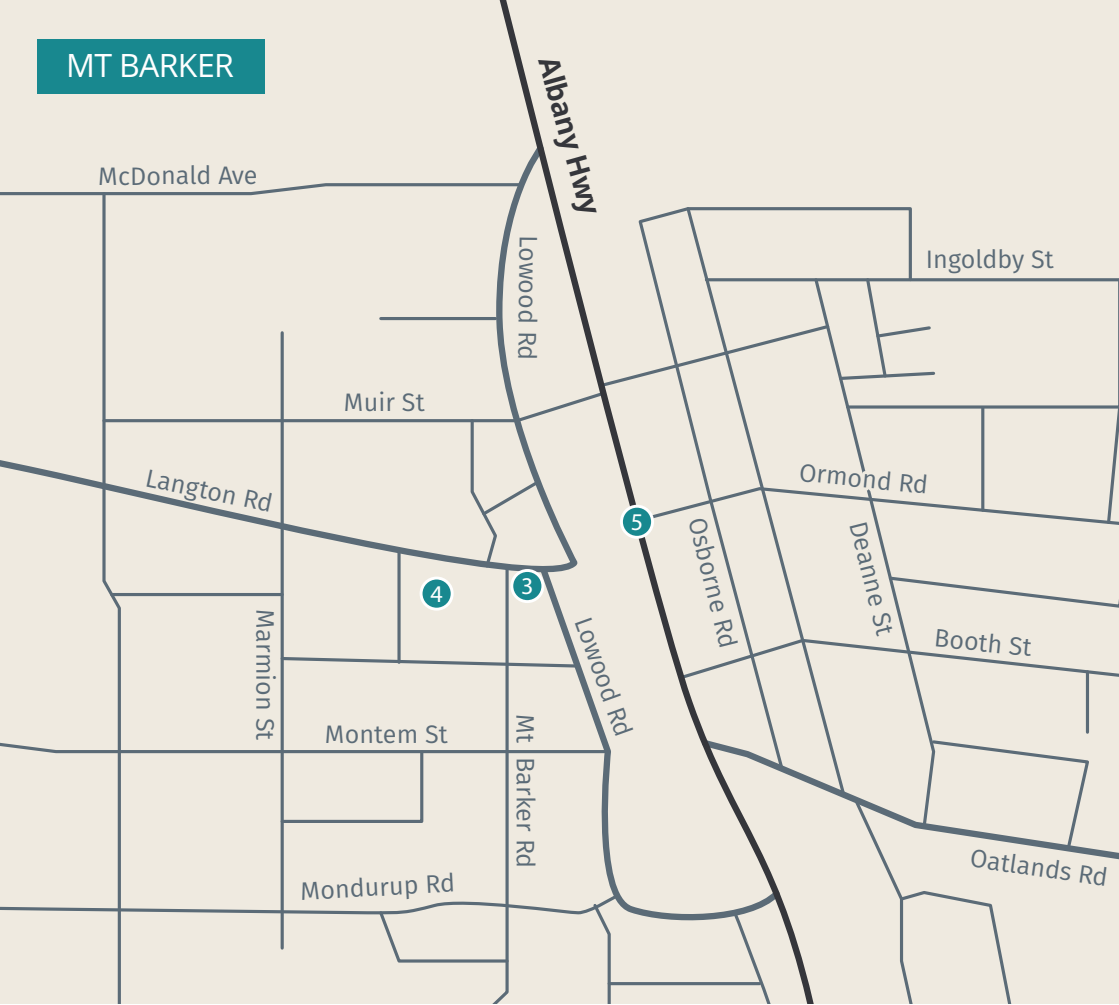
Open everyday: 9am - 4pm.

0408 423 306

BRUSHSTROKES and BOOKMARKS - A pop-up celebration of preloved books and original local artwork. Explore second-hand books donated by the community and works by local artists, including paintings and mixed-media pieces. Proceeds from all books will be donated to the Porongurup Community Association. The exhibit will celebrate our strong community spirit and support local talent.



FRI	SAT	SUN	MON	TUE	WED	THU	FRI	SAT	SUN	MON	TUE	WED	THU	FRI	SAT	SUN
03	04	05	06	07	08	09	10	11	12	13	14	15	16	17	18	19



## ART CHATTER GALLERY

3

4 Langton Rd, Mount Barker

Painting, Sculpture

Open days: 8.30am - 3.30pm.

0418 823 085

EASTER ART PARADE - Art Chatter Gallery artists present a beautiful parade of oil paintings covering a diverse range of styles and genres. Still life, landscape, seascape and everything in between.

Turn onto Langton Rd at the roundabout opposite the shire office and we are 200 metres up on your left, inside Strike Me Pink.



FRI	SAT	SUN	MON	TUE	WED	THU	FRI	SAT	SUN	MON	TUE	WED	THU	FRI	SAT	SUN
<del>03</del>	04	<del>05</del>	06	07	08	09	10	11	<del>12</del>	13	14	15	16	17	18	<del>19</del>



## LAVENDER BEE

4

2/26 Langton Rd, Mount Barker

Painting, Printmaking, Textiles, Glasswork, Photography, Mixed Media

Weekdays: 9am - 4.30pm. Weekends: 10am - 1pm.

0439 791 530

FACES AND FLOWERS - New creations on display! Introducing local watercolour artist Pam Millington, photography by Heather Brown, Handmade by Stollie fabric crafts, Carolyn's Creations, mixed media collaboration by the Lavender Bee ladies group and Homeschoolers youth exhibition. From Albany Hwy, turn onto Muir Hwy at the roundabout in Mount Barker. Turn left onto Taylor Rd, then left onto Langton Rd.



FRI	SAT	SUN	MON	TUE	WED	THU	FRI	SAT	SUN	MON	TUE	WED	THU	FRI	SAT	SUN
<del>03</del>	04	05	06	07	08	09	10	11	<del>12</del>	13	14	15	16	17	18	<del>19</del>



## MITCHELL HOUSE ARTS CENTRE

5

42 Albany Hwy, Mount Barker

Painting, Sculpture, Textiles, Ceramics, Mixed Media, Jewellery, Resin

Open everyday: 10am - 4pm.

0408 050 635

CELEBRATING HISTORY - This is a significant year for the Plantagenet region with centenary of the Porongorup National Park and the bicentenary of the establishment of the cantonment of King George Sound, of which we the shire of Plantagenet are an integral part in that history.

Our focus will be local for this exhibition.



FRI	SAT	SUN	MON	TUE	WED	THU	FRI	SAT	SUN	MON	TUE	WED	THU	FRI	SAT	SUN
03	04	05	06	07	08	09	10	11	12	13	14	15	16	17	18	19



# Lavender Bee

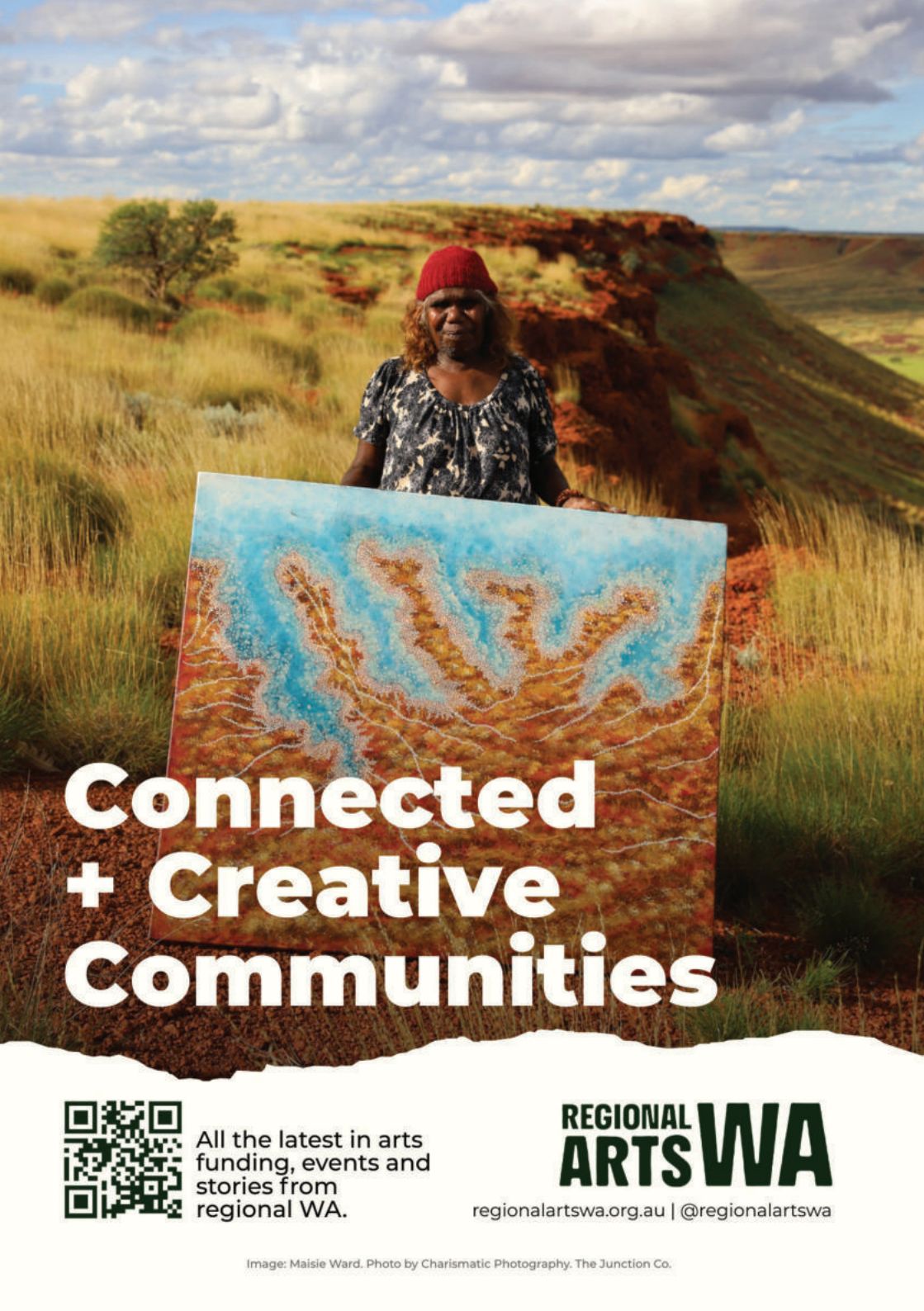
## ARTS - CRAFTS - HOBBIES

Bring your creative ideas to life. Quality supplies for professionals & hobby enthusiasts. Affordable products for your next project!

Workshops - Arty Parties - Yarn - Sewing - Painting Supplies & More

A: 2/26 Langton Road Mt Barker WA, 6324 - P: 0439 791 530

[lavenderbee.com.au](http://lavenderbee.com.au)



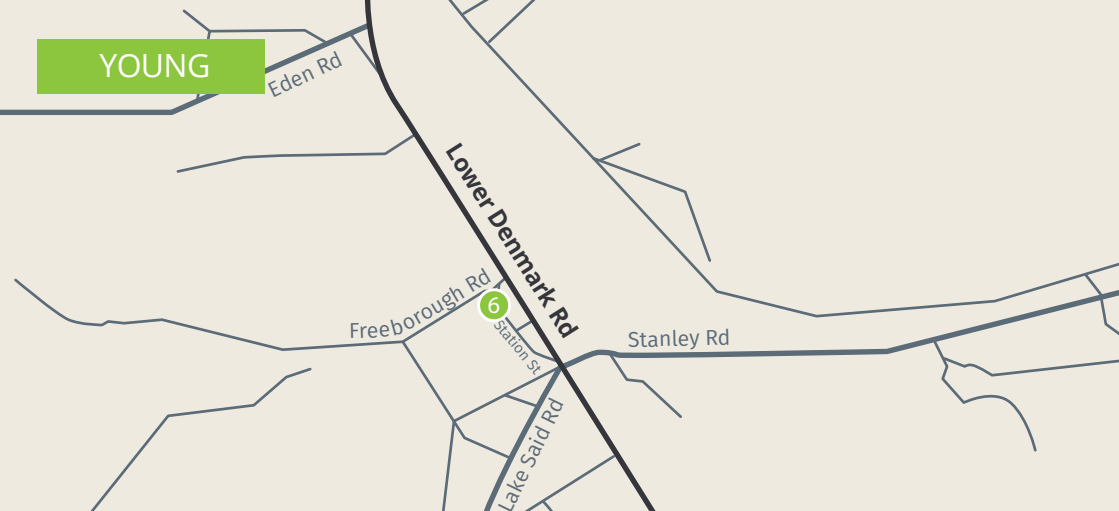
# Connected + Creative Communities



All the latest in arts  
funding, events and  
stories from  
regional WA.

**REGIONAL  
ARTS WA**

[regionalartswa.org.au](http://regionalartswa.org.au) | [@regionalartswa](https://www.instagram.com/regionalartswa)



## YOUNGS SIDING COMMUNITY ASSOCIATION

6

29 Station St, Youngs Siding

Painting, Ceramics, Mixed Media

Open days: 10am - 4pm.

0408 935 405

YOUNG'S AT HEART - Poetry and art exhibition by local poets and artists. Youngs Siding Community Association is inviting you to our 100 year old hall which will showcase an exciting experience of local talent. Our opening night on the 11th April 2026 is filled with poetry and story telling. Followed by a week of art at this historic venue.



FRI	SAT	SUN	MON	TUE	WED	THU	FRI	SAT	SUN	MON	TUE	WED	THU	FRI	SAT	SUN
<del>03</del>	<del>04</del>	<del>05</del>	<del>06</del>	<del>07</del>	<del>08</del>	<del>09</del>	<del>10</del>	11	12	13	14	15	16	17	18	<del>19</del>



# Easter Markets

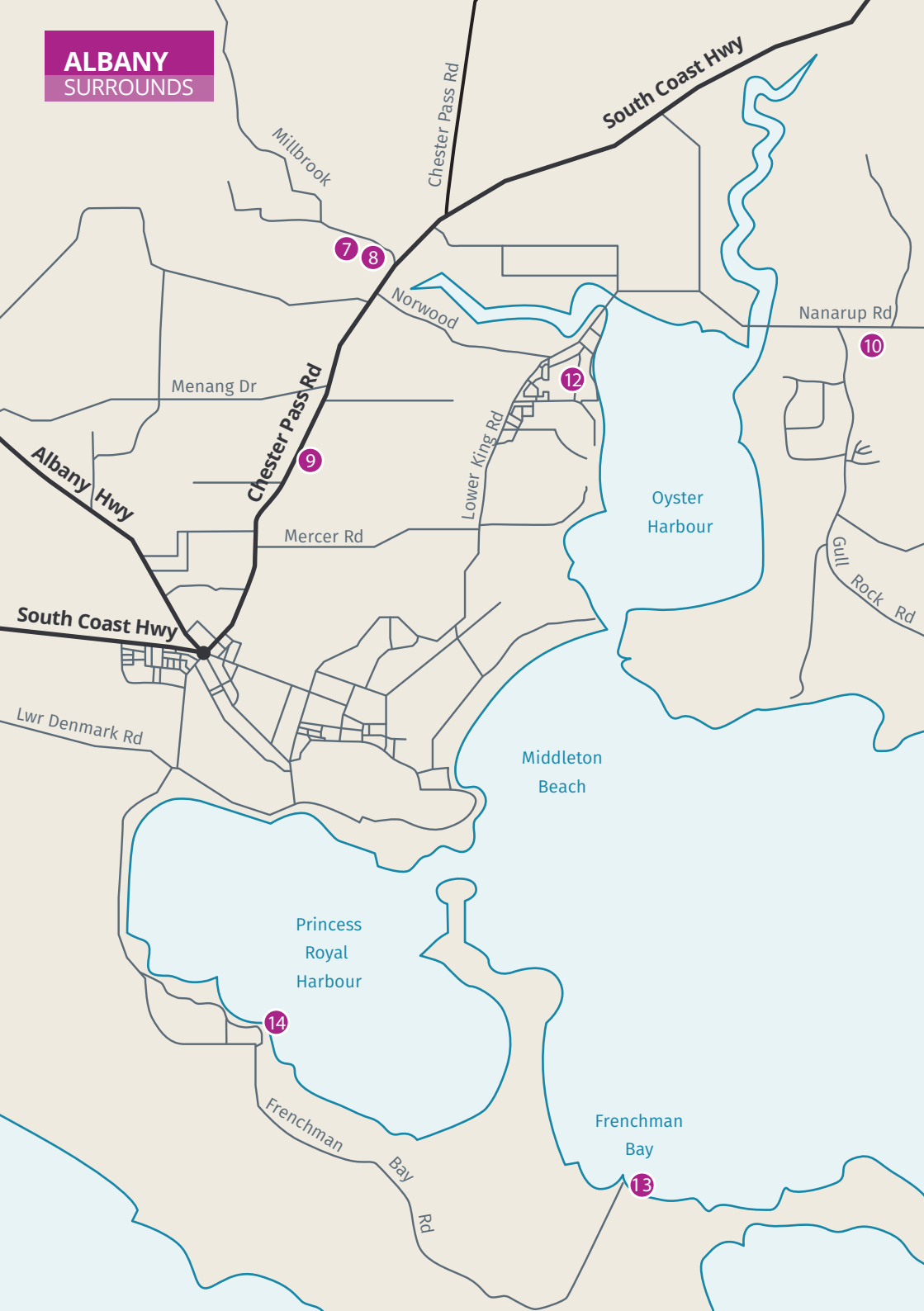
9AM-2PM SATURDAY 4 APRIL  
ALBANY TOWN SQUARE

STREET FOOD & COFFEE  
5 Bands  
LOCAL ARTS & CRAFTS  
FACE PAINTING  
KIDS ACTIVITIES

CONTACT: [ECLIPSE.EVENTSWA@GMAIL.COM](mailto:ECLIPSE.EVENTSWA@GMAIL.COM)




**ALBANY**  
SURROUNDS



7 8

10

12

9

14

13



## KING RIVER HALL

7

1520 Millbrook Rd, King River

Painting

Open days: 10am - 3pm.

0432 984 816

HANDS ON COLOUR - A soft pastel Exhibition celebrating colour, light and personal expression. Take a walk through a welcoming space of original artworks by local artists, with works available for sale.

From Albany follow Chester Pass Rd, turn left onto Millbrook Rd, and continue 200m to King River Hall.



FRI	SAT	SUN	MON	TUE	WED	THU	FRI	SAT	SUN	MON	TUE	WED	THU	FRI	SAT	SUN
<del>03</del>	04	05	06	<del>07</del>	<del>08</del>	<del>09</del>	<del>10</del>	<del>11</del>	<del>12</del>	<del>13</del>	<del>14</del>	<del>15</del>	<del>16</del>	<del>17</del>	<del>18</del>	<del>19</del>



## CYNTHIA ORR

8

Millbrook House, 1596 Millbrook Rd, King River

Painting

Open days: 10am - 3pm.

0447 211 479

CYNTHIA ORR - Cynthia presents a powerful exhibition of bold new works: oil paintings, the 'White Series' & exclusive scarf designs. Contemporary landscapes & florals, collaborating fine art, design & wearable art.

From the big roundabout take Chester Pass Rd 12km, turn left on Millbrook Rd, venue 500m on left.

Opening Night details contact Cynthia 0447 211 479



FRI	SAT	SUN	MON	TUE	WED	THU	FRI	SAT	SUN	MON	TUE	WED	THU	FRI	SAT	SUN
03	04	05	06	07	<del>08</del>	<del>09</del>	10	11	12	<del>13</del>	<del>14</del>	<del>15</del>	16	17	18	19



## BROWN AND THE BEARDS

9

Handasyde's Café, 382 Chester Pass Rd, Albany

Painting

Open days: 9am - 4pm.

0427 253 052

BROWN AND THE BEARDS - Vicki, Barry, Anne present 'oil painting exhibition (he says) extravaganza (she says) endearing bearded whimsy (Anne says). Covering Australiana to Abstract, Landscapes to Critters on board, canvas, in fabric, framed/unframed, hanging/sitting in all shapes/sizes. No specific topics, no set agendas with prices suiting every cake-eating cuppa-drinking Handasyde's Cafe visitor. 4.5km down Chesterpass Rd from the big roundabout.



FRI	SAT	SUN	MON	TUE	WED	THU	FRI	SAT	SUN	MON	TUE	WED	THU	FRI	SAT	SUN
<del>03</del>	04	05	06	07	08	09	10	<del>11</del>	<del>12</del>	<del>13</del>	<del>14</del>	<del>15</del>	<del>16</del>	<del>17</del>	<del>18</del>	<del>19</del>



## ALBANY ART GROUP

10

Lower Kalgan Hall, 516 Nanarup Rd, Kalgan

Painting, Sculpture, Mixed Media and Printmaking

Open days: 10am - 3pm.

0403 847 366

ART FROM THE EDGE - An engaging exhibition celebrating Albany Art Group's diverse talent. A mix of large and small pieces that merge traditional techniques with contemporary expressions, highlighting the breadth of styles and creativity within the group.

From Albany, travel east on Lower King/Nanarup Rd and over the bridges. Travel 2km further, the hall is on the right just past Gull Rock.



FRI	SAT	SUN	MON	TUE	WED	THU	FRI	SAT	SUN	MON	TUE	WED	THU	FRI	SAT	SUN
03	04	05	06	07	08	09	10	11	12	<del>13</del>	<del>14</del>	<del>15</del>	<del>16</del>	<del>17</del>	<del>18</del>	<del>19</del>



Discover... **designerDIRT**

ART, GIFTS + GARDEN Over 20 local artisans, workshops ...

2a/230 Chester Pass Rd, Albany [designerdirtwa.com.au](http://designerdirtwa.com.au)  



## ABIGAIL'S ECOART: STUDIO/GALLERY

11

Lower King

Painting, Jewellery, Drawing

Closed everyday.

In memorium of Abigail Parker who passed away, suddenly but peacefully, on Monday 2nd March. Abigail was doing what she loved, advocating for arts and the natural environment of this region.

Abigail was the ArtSouthWA Vice-Chairperson. She was a mother and grandmother. She was a teacher and a mentor. She was a friend to many and a leader amongst her peers. She will be missed.



## LOUISE STEWART BROWN CREATIVE WORKS

12

91 Elizabeth St, Lower King

Painting, Printmaking, Drawing, Textiles, Ceramics, Mixed Media

Open days: 10am - 4pm.

0418 919 045

**BOLD BRIGHT BEAUTIFUL** - Louise enjoys painting the many moods of the ocean, endless beaches and its beautiful creatures. Birds, Fish, Seahorses and Sea Birds, Selkies, Sirens and Mermaids. Boats, Yachts, Sunsets and Coastal Flora have become her signature. Louise also creates intensely colourful Sensational Silk Scarves and has taken up geli printing recently and creating Blooming Beauties on Canvas.



FRI	SAT	SUN	MON	TUE	WED	THU	FRI	SAT	SUN	MON	TUE	WED	THU	FRI	SAT	SUN
03	04	<del>05</del>	06	07	<del>08</del>	09	10	11	12	13	14	<del>15</del>	16	17	18	19

# Get noticed.

with  
**SYNERGY**  
GRAPHICS

Your Albany local graphic + website designers

[www.synergygraphics.com.au](http://www.synergygraphics.com.au)



## JO WASSELL | ALBANY'S HISTORIC WHALING STATION

13

Albany's Historic Whaling Station,

Drawing, Mixed Media

Open every day: 9am - 5pm.  
9844 4021

**WOMEN IN WHALING** - An artist in residence project by Jo Wassell at AHWS, unfolding through a three-month period of intimate sittings, photography and archival research, weaving together drawings and stories as acts of witnessing, making visible the stories of wives and daughters of past whalers. Proceed to Frenchman Bay Rd and drive 18km, then turn right onto Whaling Station Rd.



FRI	SAT	SUN	MON	TUE	WED	THU	FRI	SAT	SUN	MON	TUE	WED	THU	FRI	SAT	SUN
03	04	05	06	07	08	09	10	11	12	13	14	15	16	17	18	19



## PAULA MORRISON - BLUE WATERS STUDIO

14

50 Chipana Dr, Little Grove

Painting

Open days: 10am - 4pm.  
0427 098 098

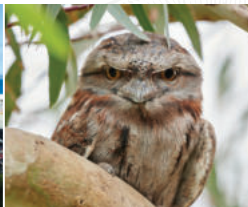
**BRINGING LANDSCAPES TO LIFE** - Explore the artistry of Paula, an oil painter who masterfully captures the essence of landscapes. Original and prints available of many West Australian scenes. Prices reduced to clear space for new work.

Proceed to Frenchman Bay Rd, turn left onto Bayview Tce at the Little Grove store, then right into Chipana Dr.



FRI	SAT	SUN	MON	TUE	WED	THU	FRI	SAT	SUN	MON	TUE	WED	THU	FRI	SAT	SUN
03	04	05	06	07	<del>08</del>	<del>09</del>	10	11	12	13	14	<del>15</del>	<del>16</del>	17	18	19

## Historic Whaling Station • Australian Wildlife • Wildflower Garden



Experience Western Australia's **GOLD**  
Award Winning Cultural Tourist Attraction!

81 Whaling Station Road, Torndirrup WA 6330  
Open 7 days | P. (08) 9844 4021 | [discoverybay.com.au](http://discoverybay.com.au)



# A Celebration of *Bees*

As you enjoy the colour and creativity of the 2026 Easter Arts Festival, take a moment to snap a photo wearing bee wings beside Albany's newest mural at 30 Peels Place. This eye-catching artwork was painted by Charli Colbung, a gifted artist originally from Mt Barker, and has quickly become a vibrant addition to the lower York Street precinct.

The mural showcases both native and introduced bee species, drawing attention to their vital contribution to life on Earth. Bees play a crucial role in sustaining ecosystems and supporting human survival. By pollinating 70 of the 100 crop species that provide 90% of the world's food, they underpin global food security. Their work ensures the growth of fruits, vegetables, nuts, and seeds, while also preserving biodiversity and strengthening agricultural economies.

In addition to pollination, bees supply treasured natural products including honey, beeswax, and royal jelly.

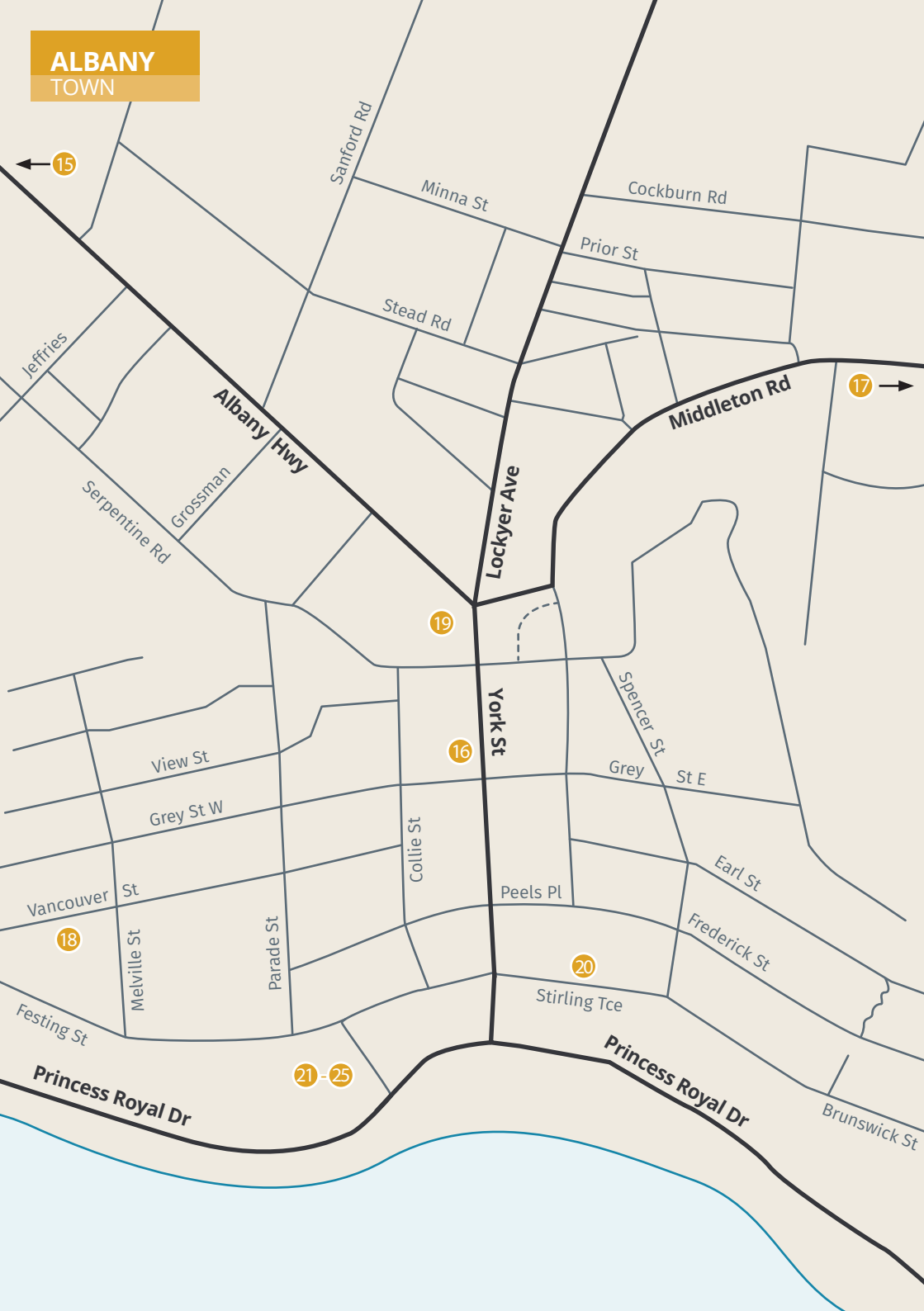


Commissioned by The Health Nut owners in collaboration with ArtSouthWA and funders, the mural was designed to brighten a once plain corner and share a positive, uplifting message. During its creation, the artwork gained significant attention on social media, going viral and helping Charli expand his professional profile while building a more sustainable creative career.

This project is proudly supported by the WA Government's Regional Arts and Cultural Investment Program, delivered to the community by Regional Arts WA." the City of Albany, and the Health Nut.



**ALBANY**  
TOWN





## CAROL HOPE | ALBANY ART CAFÉ 15

Printmaking, Painting, Drawing, Jewellery, Mixed Media, Other

Open days: 8.30am - 3pm.  
0483 822 197

VIBRANT EXPLORATION - Drawing inspiration from the natural beauty across this region, Carol shares her interpretations in many forms. From the big roundabout, exit onto South Coast Hwy. Drive 1km then turn left onto Townsend St. The venue is 300m along on the right.



FRI	SAT	SUN	MON	TUE	WED	THU	FRI	SAT	SUN	MON	TUE	WED	THU	FRI	SAT	SUN
<del>03</del>	<del>04</del>	<del>05</del>	<del>06</del>	07	08	09	10	<del>11</del>	<del>12</del>	13	14	15	16	17	<del>18</del>	<del>19</del>



## ALBANY TOWN HALL 16

Albany Town Hall, 217 York St, Albany

Painting, Sculpture, Printmaking, Drawing, Photography

Open days: 10am - 5pm.  
6820 3850

GREAT SOUTHERN ART AWARD - Celebrating creativity, innovation, and artistic excellence within our region, the Great Southern Art Award exhibition offers a professional platform for artists to showcase their talent to a wider audience. The award is open to established, emerging and young artists who reside in the Great Southern.



FRI	SAT	SUN	MON	TUE	WED	THU	FRI	SAT	SUN	MON	TUE	WED	THU	FRI	SAT	SUN
<del>03</del>	04	<del>05</del>	06	07	08	09	10	11	<del>12</del>	13	14	15	16	17	18	<del>19</del>



### Vancouver Arts Centre

85 Vancouver St  
6820 3740

### Albany Town Hall

217 York Street  
6820 3850

Scan the QR code to find out what's on or go to [artsandculture.albany.wa.gov.au/events](https://artsandculture.albany.wa.gov.au/events)





## SHADY BOOZE HOUNDS

17

122 Hare St, Mount Clarence

Mixed Media, Printmaking, Painting, Metalwork

Open days: 10am - 4pm.

0422 998 178

SHORT AND SHADY - This family of creatives regroup for a short time only at the start of Easter. Bronwen Newbury, Laura Newbury, Anna Anderson and Megan Anderson bring a shared sense of play to their respective artworks, which feature crowded beaches, rowdy dinners, sleepy streetscapes, and dogs.

Head south off Middleton Rd to 122 Hare St, between Sussex and Denman.



FRI	SAT	SUN	MON	TUE	WED	THU	FRI	SAT	SUN	MON	TUE	WED	THU	FRI	SAT	SUN
03	04	<del>05</del>	<del>06</del>	<del>07</del>	<del>08</del>	<del>09</del>	<del>10</del>	<del>11</del>	<del>12</del>	<del>13</del>	<del>14</del>	<del>15</del>	<del>16</del>	<del>17</del>	<del>18</del>	<del>19</del>



## LEE GARVEY

18

Vancouver Arts Centre, 85 Vancouver St, Albany

Painting

Saturdays: 10am to 2pm, Every other day: 10am to 4pm

0427 464 182

ABOUT FACE - Lee Garvey is a contemporary artist whose practice centres on portraits on large-scale canvases. She is interested in using paint to express emotion and create a strong sense of presence.

Drive down York St, Turn right on Grey St, Left on Melville St and then Right on Vancouver St.



FRI	SAT	SUN	MON	TUE	WED	THU	FRI	SAT	SUN	MON	TUE	WED	THU	FRI	SAT	SUN
<del>03</del>	<del>04</del>	<del>05</del>	<del>06</del>	<del>07</del>	<del>08</del>	<del>09</del>	10	11	<del>12</del>	13	14	15	16	17	18	<del>19</del>



## PHOENIX FINE ARTS

19

CWA Hall, 94 Serpentine Rd, Albany

Painting, Sculpture, Mixed Media, Drawing

Sunday 5th: 12pm - 4pm, Every other day: 10am to 4pm

0403 783 669

RENAISSANCE - an exciting exhibition featuring varied artworks by a new combination of 10 local talents: Kate Myers, Abigail Parker, Charles DeBruin, Stephanie Dimmock, John Coen, Suzanne Randall, Roger Mills, Leo Birch, Deirdre Barrott, Dianne Buxton. Original paintings, cards, prints, jewellery available.



FRI	SAT	SUN	MON	TUE	WED	THU	FRI	SAT	SUN	MON	TUE	WED	THU	FRI	SAT	SUN
<del>03</del>	04	05	06	07	08	09	<del>10</del>	<del>11</del>	<del>12</del>	<del>13</del>	<del>14</del>	<del>15</del>	<del>16</del>	<del>17</del>	<del>18</del>	<del>19</del>



## HEATHER BROWN

20

Dylans on the Terrace, 82-84 Stirling Tce, Albany

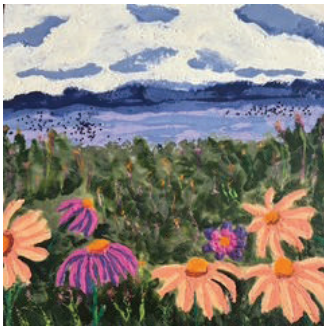
Photography

Tuesday to Friday: 7am - 4pm, Saturday to Sunday: 8am - 4pm  
0402 577 294

WILD FLORA - Step into the vibrant world around you, where flowers bloom, leaves swirl, and colors burst at every turn. Through the lens of photography, we capture nature's intricate patterns—delicate petals, twisted vines, and hidden moments that tell stories. Heather's prints bring these scenes to life, allowing both young and old to see our ecosystem in all its breathtaking detail.



FRI	SAT	SUN	MON	TUE	WED	THU	FRI	SAT	SUN	MON	TUE	WED	THU	FRI	SAT	SUN
<del>03</del>	04	05	<del>06</del>	07	08	09	10	11	12	<del>13</del>	14	15	16	17	18	19



## ANNIE JOHNSON

21

Museum of the Great Southern, Pop Up Gallery, Residency Rd, Albany

Painting, Encaustic, Drawing, Textiles, Woodwork, Mixed Media

Open every day: 10am to 4pm, Closed Good Friday  
0417 929 906

ALBANY'S NATURAL WORLD - My work explores the quiet dialogue between life and landscape, and the pulse of the natural world that hums beneath every petal, branch and breath.

Travel south on York St, turning right at the last roundabout. Turn left into Residency Rd, then turn right into venue.



FRI	SAT	SUN	MON	TUE	WED	THU	FRI	SAT	SUN	MON	TUE	WED	THU	FRI	SAT	SUN
<del>03</del>	04	05	06	07	08	09	10	11	12	13	14	15	16	17	18	19



## SUE NOAKES

22

Museum of the Great Southern, Pop Up Gallery, Residency Rd, Albany

Sculpture, Woodwork, Painting, Textiles, Ceramics

Open every day: 10am to 4pm, Closed Good Friday  
0418 596 168

ALBANY'S NATURAL WORLD - My look on Albany's Natural World from bugs to landscape; from clay to paint and paper to textiles. Come see and enjoy.

Travel south on York St and then turn right at the last roundabout. Turn left onto Residency Rd and then turn right into venue.



FRI	SAT	SUN	MON	TUE	WED	THU	FRI	SAT	SUN	MON	TUE	WED	THU	FRI	SAT	SUN
<del>03</del>	04	05	06	07	08	09	10	11	12	13	14	15	16	17	18	19



## HELEN PARRY

23

Museum of the Great Southern, Pop Up Gallery, Residency Rd, Albany

*Sculpture, Woodwork, Painting, Textiles, Ceramics*

Open every day: 10am to 4pm, Closed Good Friday

0478 151 953

COLOUR AND CLAY - A range of quirky and highly patterned 'distorted tower-like ceramic forms, along with brightly painted pieces and contrasting sets of monochromatic etched vessels. There's also a set of framed sculpted animals that demonstrate her realistic painting skills.

Travel south on York St, turn right at the last roundabout. Turn left into Residency Rd, then right into venue.



FRI	SAT	SUN	MON	TUE	WED	THU	FRI	SAT	SUN	MON	TUE	WED	THU	FRI	SAT	SUN
<del>03</del>	04	05	06	07	08	09	10	11	12	13	14	15	16	17	18	19



## TERRI PIKORA

24

Museum of the Great Southern, Pop Up Gallery, Residency Rd, Albany

*Mixed Media*

Open every day: 10am to 4pm, Closed Good Friday

0419 983 985

STITCHING THE PAGE - Exploring the use of hand stitching on paper, this exhibition presents paintings and collage works that combines hand stitching with layered surfaces to create unique, one-of-a-kind artworks.

Travel south on York St and turn right at the last roundabout. Turn left onto Residency Rd and then turn right into venue.



FRI	SAT	SUN	MON	TUE	WED	THU	FRI	SAT	SUN	MON	TUE	WED	THU	FRI	SAT	SUN
<del>03</del>	04	05	06	07	08	09	10	11	12	13	14	15	16	17	18	19



## ANNE SPARROW, DIANA HENDERSON & JASMINE PEART

25

Museum of the Great Southern, Pop Up Gallery, Residency Rd, Albany

*Painting, Textiles, Photography, Mixed Media*

Open every day: 10am to 4pm, Closed Good Friday

Diana: 0423 174 791, Anne: 0498 194 222, Jasmine: 0481 978 613

HOME STUDIES - Home Studies brings together Anne's handmade gnomes, Diana's embroidered floral photography, and Jasmine's watercolours and architectural line work, examining home as a specimen: bloom, shelter, memory, and detail, each contributing to an enduring mythology of home.

Travel south on York St and turn right at the last roundabout. Turn left onto Residency Rd and then turn right into venue.



FRI	SAT	SUN	MON	TUE	WED	THU	FRI	SAT	SUN	MON	TUE	WED	THU	FRI	SAT	SUN
<del>03</del>	04	05	06	07	08	09	10	11	12	13	14	15	16	17	18	19

# ACKNOWLEDGEMENTS

## ArtSouthWA

We thank all the wonderful sponsors, contributors, advertisers and venues who have supported the second Easter Arts Festival. Without their generosity and support this event would not have been as engaging. We could not have don't it without you all.

We encourage all our followers to connect and consider becoming customers of all our supporters.

### PLATINUM SPONSORS



Community Bank  
Albany



GOLD SPONSORS



GOLD SPONSORS



BRONZE SPONSORS



DONORS

# THANKYOU



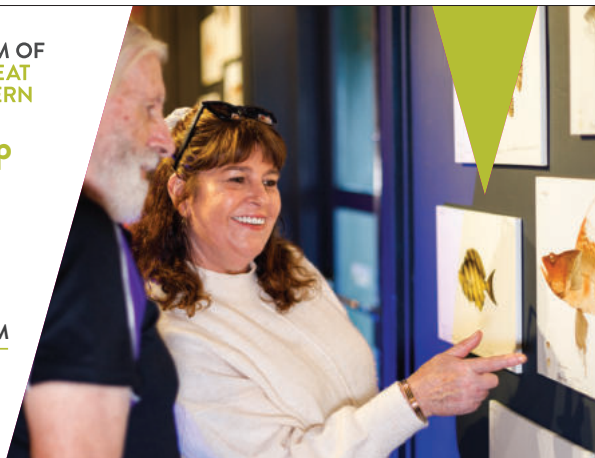
Explore expressive pop-up artworks and discover the region's natural and social history.

FREE ENTRY | OPEN DAILY | 10AM - 4PM

[visit.museum.wa.gov.au/greatsouthern](http://visit.museum.wa.gov.au/greatsouthern)

\*Some programs and events may attract a fee.

Image: Luke Riley Creative





**Big on banking.**

**Bigger for you.**

Your financial goals, our expert support.

Get local, personalised help with your everyday banking, home loans, and business needs.

**Contact our friendly team to get started.**

📍 Community Bank · Albany  
08 9842 1911

**B Bendigo Bank**  
The better big bank